



Organ Systems Answer Key

Every definition card has a small number in the bottom right corner.

Alveolus	23	Musculoskeletal System...	31
Anus	14	Mouth	16
Artery	02	Myelin Sheath	43
Axon	42	Nasal Cavity	24
Blood	10	Nerve	48
Bone	36	Nervous System.....	41
Brain	47	Neuron	46
Bronchus.....	28	Osteoporosis.....	40
Capillary	03	Pancreas.....	20
Cardiac Muscle Tissue	35	Peripheral Nervous System....	45
Cartilage.....	37	Pharynx.....	27
Central Nervous System...	49	Plasma.....	05
Cilia.....	25	Platelet.....	09
Circulatory System	01	Red Blood Cell.....	08
Diaphragm	29	Respiratory System.....	21
Digestive System.....	11	Sensory Receptor.....	44
Digestive Tract.....	12	Skeletal Muscle Tissue.....	34
Esophagus.....	17	Small Intestine.....	18
Gas Exchange.....	30	Smooth Muscle Tissue.....	39
Heart.....	06	Spinal Cord.....	50
Large Intestine.....	19	Stomach	13
Ligament.....	32	Tendon.....	33
Liver.....	15	Trachea.....	22
Lung	26	Vein.....	07
Muscle Fibre	38	White Blood Cell	04

Memory Game Rules

Starting the Game

Select the organ systems that you want to practice. Shuffle them, then lay them out face down in a grid.

Playing the Game

When it's your turn, flip a card over. Then flip another card over.

- If the two cards do not match then flip them back over so they are face down. Your turn is over.
- If the two cards match leave them face up and score a point. You may play again.

If you make a mistake when claiming a matched pair, you suffer a one point penalty and your turn is over.

Ending the Game

The game is over when all cards are turned over.

Scoring

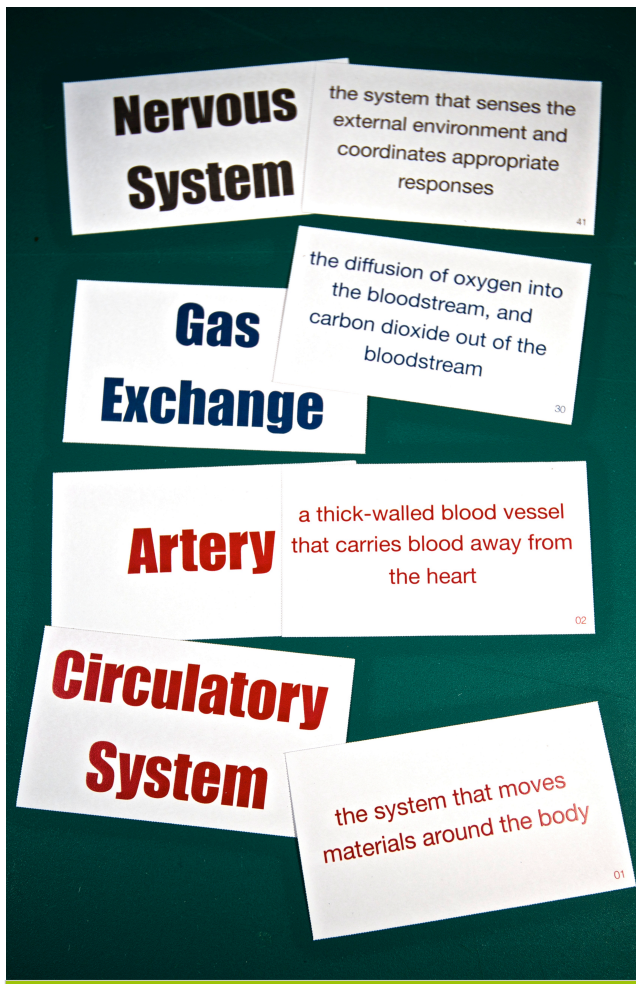
You score one point for every pair that you match. You lose one point for every pair that you claim by mistake.

Organ Systems Matching Game



“Biology is the study of complicated things that have the appearance of having been designed with a purpose.”

Richard Dawkins



Starting the Game

Deal eight cards to every player. Place the deck face down in the middle of the table.

Each player places any matching pairs in them, but does *not* draw replacement cards. Players can challenge each other if they think the pairs are incorrect.

Playing the Game

On your turn, you ask a specific player for a specific card.

- The requested card must pair with a card already in your hand.
- Questions should be in one of the following forms: “*Bill, do you know the definition for the <organ>?*” or “*Sally, do you know what <definition> is?*”

If they do not have the card, your turn is over.

If you get the card you asked for, place the matching pair in front of you and ask for another card. You may ask any player.

If you get a card that doesn't match, you may examine the other player's hand and take any card you like.

- If this makes a matching pair, place the matching pair in front of you and ask for another card. You may ask any player.
- If it doesn't make a matching pair, your turn is over.

When your turn is over, draw a card from the deck.

Challenging

If another player plays a pair that you think doesn't match, you can challenge them. If you are right (and the cards didn't match) you may either

- take both cards and add them to your hand, or
- give them back the cards, and give them any two cards from your hand.

Ending the Game

The game is over as soon as any player runs out of cards.

Scoring

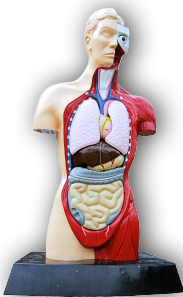
Once the game is over, add up your score as follows:

- 1 point for every pair
- 10 points for playing all your cards
- 10 points for having a complete organ system

Variants

- Remove some of the organ systems from the deck.
- A player who runs out of cards ends their turn and draws one card from the deck. The game ends when all the cards have been played.
- A player asks everyone for a card, rather than a specific player. (Eg. “*Does anyone have a lung?*”)
- A player can ask for a type of card rather than a specific card. (Eg. “*Bill, do you have a nervous system definition?*”)

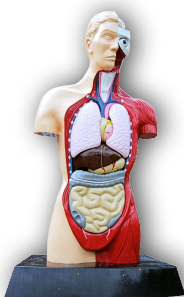
**Organ
Systems**



**Matching
Game**

Photograph ©2012 Jim Linwood. Used under Creative Commons license CC BY 2.0.

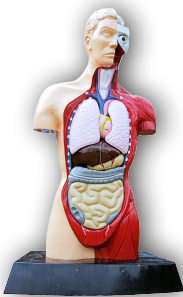
**Organ
Systems**



**Matching
Game**

Photograph ©2012 Jim Linwood. Used under Creative Commons license CC BY 2.0.

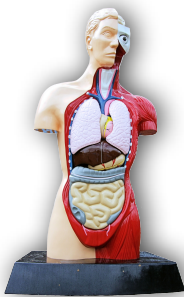
**Organ
Systems**



**Matching
Game**

Photograph ©2012 Jim Linwood. Used under Creative Commons license CC BY 2.0.

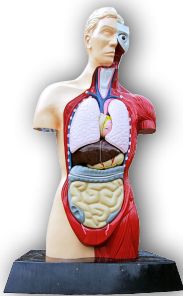
**Organ
Systems**



**Matching
Game**

Photograph ©2012 Jim Linwood. Used under Creative Commons license CC BY 2.0.

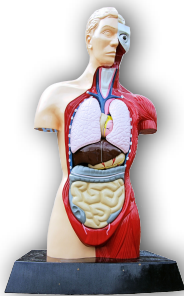
**Organ
Systems**



**Matching
Game**

Photograph ©2012 Jim Linwood. Used under Creative Commons license CC BY 2.0.

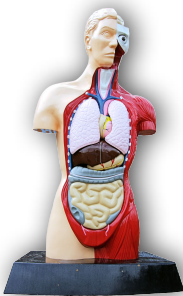
**Organ
Systems**



**Matching
Game**

Photograph ©2012 Jim Linwood. Used under Creative Commons license CC BY 2.0.

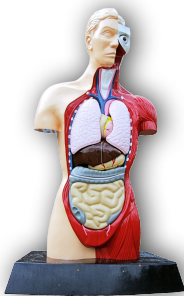
**Organ
Systems**



**Matching
Game**

Photograph ©2012 Jim Linwood. Used under Creative Commons license CC BY 2.0.

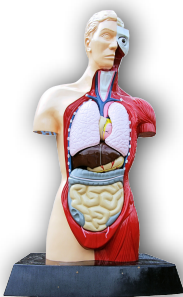
**Organ
Systems**



**Matching
Game**

Photograph ©2012 Jim Linwood. Used under Creative Commons license CC BY 2.0.

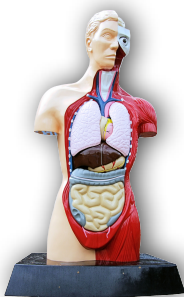
**Organ
Systems**



**Matching
Game**

Photograph ©2012 Jim Linwood. Used under Creative Commons license CC BY 2.0.

**Organ
Systems**



**Matching
Game**

Photograph ©2012 Jim Linwood. Used under Creative Commons license CC BY 2.0.

**Circulatory
System**

Heart

Artery

Vein

Capillary

**Red Blood
Cell**

**White
Blood Cell**

Platelet

Plasma

Blood

Heart

the organ that pumps blood around the body

06

the system that moves materials around the body

01

Circulatory System

Vein

a blood vessel that returns blood to the heart

07

a thick-walled blood vessel that carries blood away from the heart

02

Artery

Red Blood Cell

a cell that transports oxygen

08

a tiny thin-walled blood vessel that enables the exchange of gases, nutrients, and wastes between the blood and body tissues

03

Capillary

Platelet

a very small cell that helps blood clot

09

a cell that fights infection

04

White Blood Cell

Blood

a type of connective tissue that circulates throughout the body

10

a protein-rich liquid that carries blood cells along

05

Plasma

**Digestive
System**

**Digestive
Tract**

Stomach

Anus

Liver

Mouth

Esophagus

**Small
Intestine**

**Large
Intestine**

Pancreas

Mouth

the first part of the digestive tract, where food is mechanically and chemically broken down

16

the system that processes food to absorb nutrients

11

Digestive System

Esophagus

a muscular tube connecting the mouth and stomach

17

a long tube with an opening at each end, where food is digested; made up of several organs

12

Digestive Tract

Small Intestine

the narrower part of the intestines, where most digestion occurs

18

an organ that holds food and further digests it with enzymes and acid

13

Stomach

Large Intestine

the wider part of the intestines, where water is absorbed

19

the last part of the digestive tract, where feces emerges

14

Anus

Pancreas

an organ that produces insulin

20

an organ that produces bile, which aids in digesting fats

15

Liver

**Respiratory
System**

Lung

Trachea

Pharynx

Alveolus

Bronchus

**Nasal
Cavity**

Diaphragm

Cilia

**Gas
Exchange**

Lung

the organ where gas exchange occurs

26

the system that provides oxygen for the body and allows carbon dioxide to leave the body

21

Respiratory System

Pharynx

the throat, which can pass both food and air

27

a tube ringed with cartilage that passes air to the lungs

22

Trachea

Bronchus

the tube that connects a single lung to the trachea

28

a small sac in the lungs lined with capillaries

23

Alveolus

Diaphragm

the muscle that moves the lungs

29

a large air-filled space in the middle of the face, which conditions the air being breathed in

24

Nasal Cavity

Gas Exchange

the diffusion of oxygen into the bloodstream, and carbon dioxide out of the bloodstream

30

hairlike projections that help move mucus and filter out foreign material

25

Cilia

**Musculoskeletal
System**

Bone

Ligament

Cartilage

Tendon

**Muscle
Fibre**

Skeletal

Smooth

Muscle Tissue

Muscle Tissue

**Cardiac
Muscle Tissue**

Osteoporosis

Bone	a rigid organ made up of dense connective tissue	36	the system that supports and moved the body	31	Musculoskeletal System
Cartilage	dense, flexible connective tissue providing low-friction support	37	tough, elastic connective tissue that holds bones together at joints	32	Ligament
Muscle Fibre	a long cell containing specialized proteins that can contract, shortening the cell	38	a strong band of connective tissue connecting a muscle to a bone	33	Tendon
Smooth Muscle Tissue	involuntary non-striated muscle tissue	39	striated muscle tissue under voluntary control	34	Skeletal Muscle Tissue
Osteoporosis	a disease involving loss of bone tissue, making bones weak and brittle	40	involuntary striated muscle tissue in the heart	35	Cardiac Muscle Tissue

**Nervous
System**

Neuron

Axon

Brain

**Myelin
Sheath**

Nerve

**Sensory
Receptor**

**Central
Nervous System**

**Peripheral
Nervous System**

Spinal Cord

Neuron

a nerve cell

46

the system that senses the external environment and coordinates appropriate responses

41

Nervous System

Brain

the main part of the central nervous system, where an organism's behaviour is controlled

47

the long, slender projection of a neuron that carries an electrical signal

42

Axon

Nerve

a bundle of neurons surrounded by connective tissue

48

an insulating sheath surrounding an axon

43

Myelin Sheath

Central Nervous System

the core of the nervous system, consisting of the brain and spinal cord

49

a special cell or tissue that converts input from the external environment into signals

44

Sensory Receptor

Spinal Cord

a thick bundle of nerve tissue along the spine

50

nerves that carry signals between the central nervous system and the body

45

Peripheral Nervous System