

Frog Dissection



SAFETY FIRST



Mr. Onlock
Awesome Scientist

PROBE

FORCEPS

SCISSORS



These are the tools we will use — no scalpel

PICK HIM!
PICK HIM!

Choose a good frog . . .



1.

Observe dorsal surface



2.

Observe ventral surface

Head

external nares*
eyes*
tympanum*
nictitating membrane*

FIND THESE...

Skin

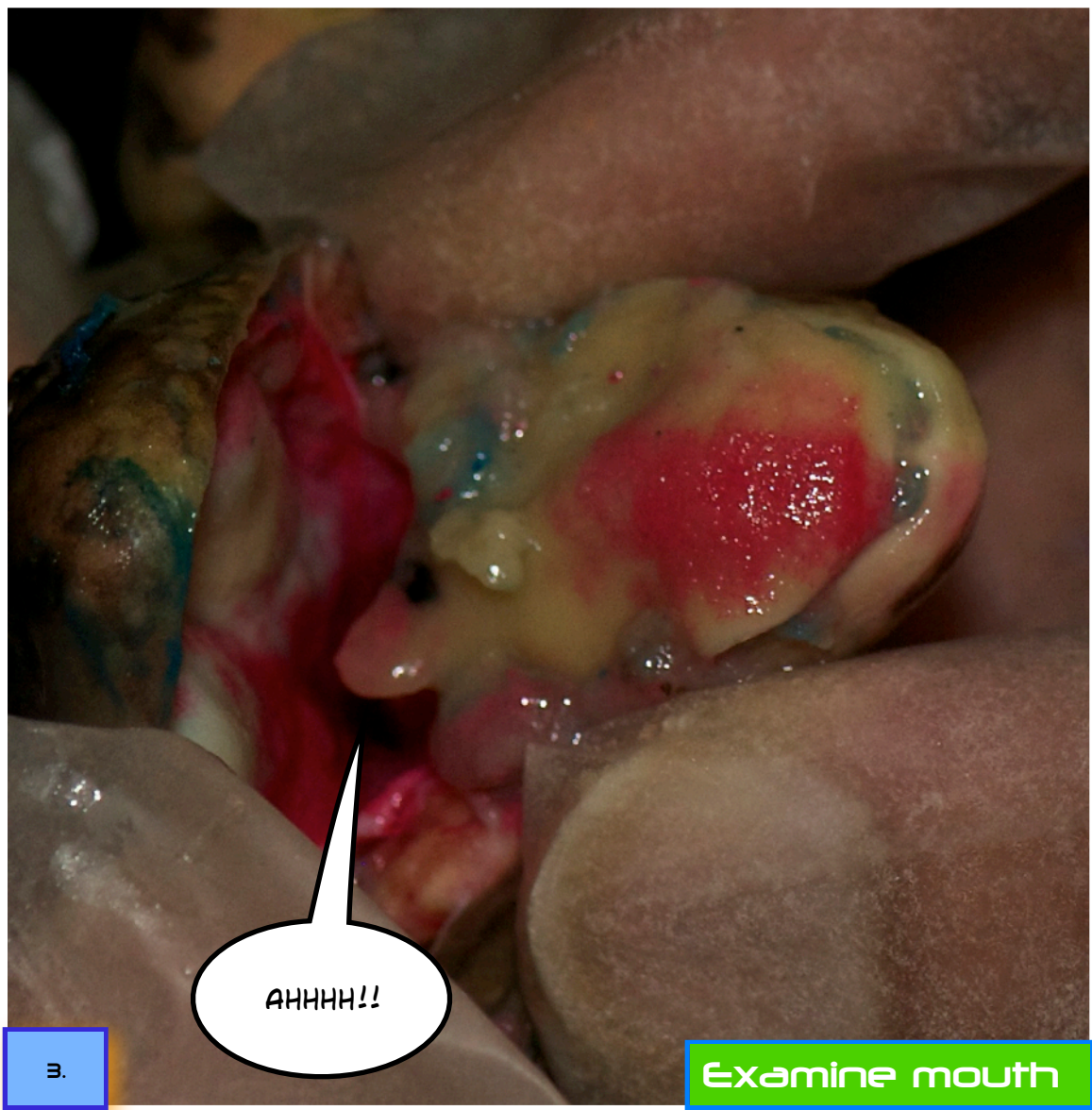
texture
markings

Trunk

cloaca*

Appendages

forelimbs*
elbow
digits
hind limbs*



NOTE

You will be expected to identify all anatomical features marked with an asterisk* at the end of the lab.

Mouth

- maxillary teeth*
- vomerine teeth*
- internal nares*
- esophagus
- glottis
- tongue*

Carefully lift the skin and cut . . .



Cut the skin to the throat



NOTE

Always put
the blunt
end of the
scissors
into the frog,
not the
sharp end.

Then cut flaps . . .

6.



7.

DUDE! I'M
TICKLISH...

The open frog ...

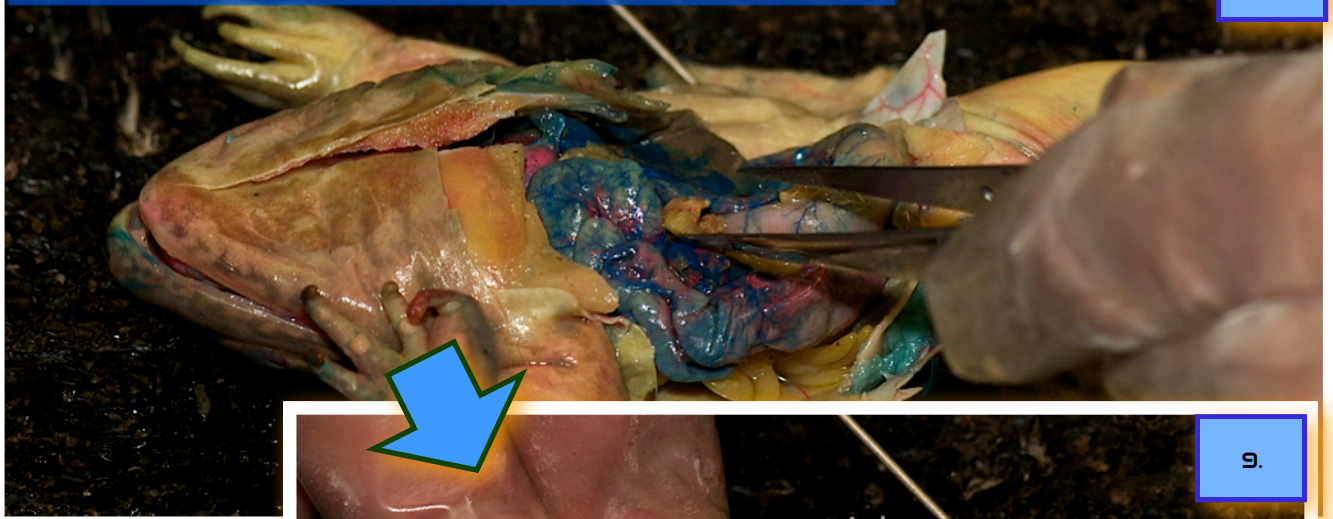


Totally revealing!



Carefully remove the fat fingers.

8.



9.



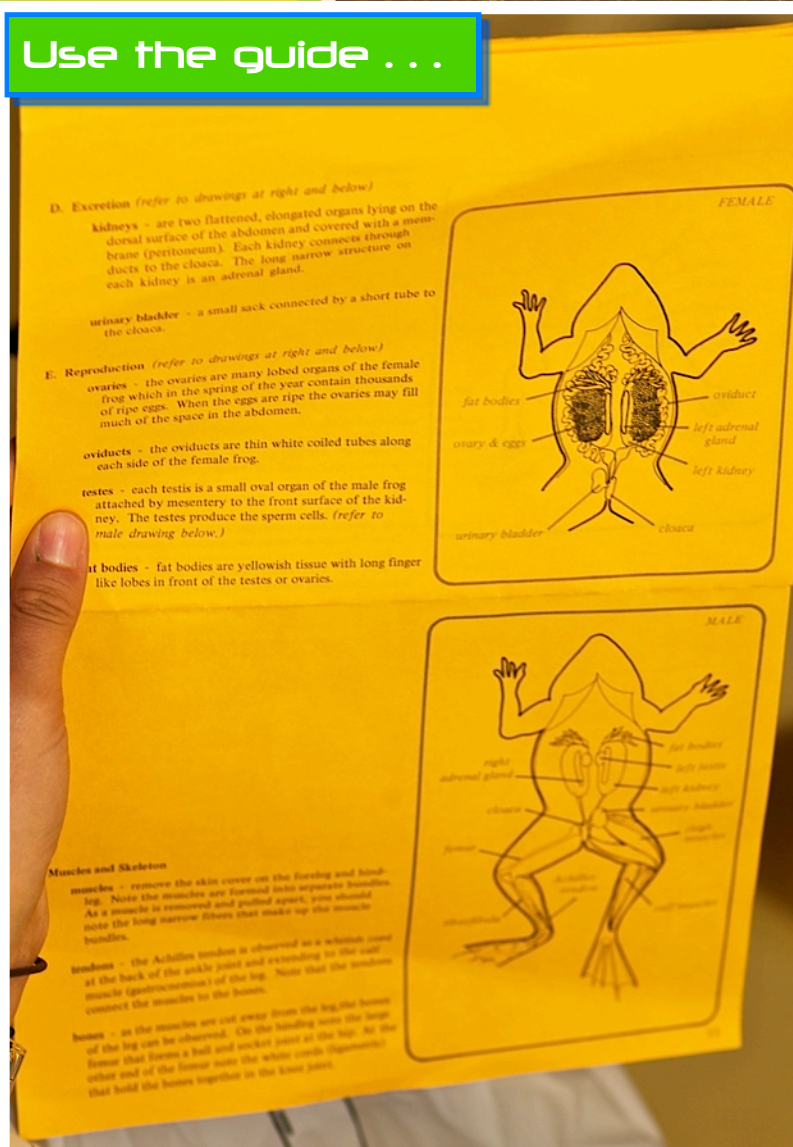
10.

LEAVE ONE
FAT FINGER

FIND THESE...



Use the guide . . .



Internal Organs

fat bodies*
heart*
liver*
spleen*
lungs*
esophagus
stomach*
small intestine*
large intestine*
gall bladder
pancreas
kidneys
ovaries
fallopian tubes
testes

CREDITS

Dissection: Mr. Onlock

Photography: Mr. Prior

Comic book created with
Comic Life 2 from Plasq
Software.

BIOLOGY



Dissection is an important skill. In this lab you will dissect a grass frog, observing for yourself its internal organs.

