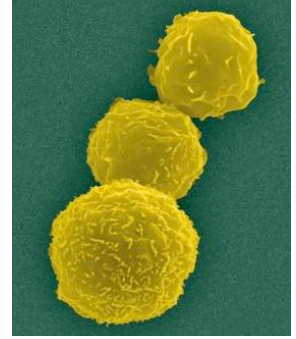
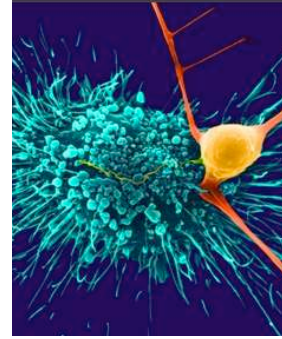
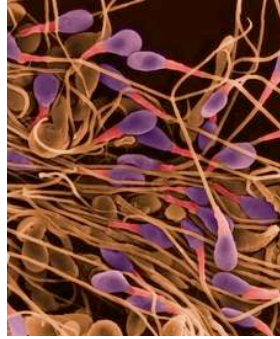


Name

Section

Biology



**A1.11**

communicate ideas, using appropriate language and a variety of formats

**A1.12**

use appropriate graphic modes of representation

**B2.3**

examine plant and animal cells and draw labelled biological diagrams to show how the cells' organelles differ

**B2.4**

investigate specialized cells and draw labelled biological diagrams to show the cells' structural differences

## Cellular Snacks

Food is made out of cells. In this assignment, you will make a cell out of food.

We have studied the structure of both plant and animal cells, as well as how the shape and other characteristics of specialized cells enables them to carry out their functions within an organism. In this activity, you will make a model of *either* a single cell, showing its internal structure and organelles, *or* a small number of specialized cells showing how they form a tissue.

Your model should be edible, and big enough to serve at least twice as many people as are in your group. Your model should look realistic (within the constraints of being edible). Include a sketch of your model with a legend, as well as a short explanation of the function of each identified feature.

Your model will show either

- the **internal structure** and **organelles** of an **animal cell** or **plant cell**

or

- the **external structure** and **features** of a **specialized cell** within a **tissue**

Cell

Due Date