**B2.1**

use appropriate terminology
related to cells

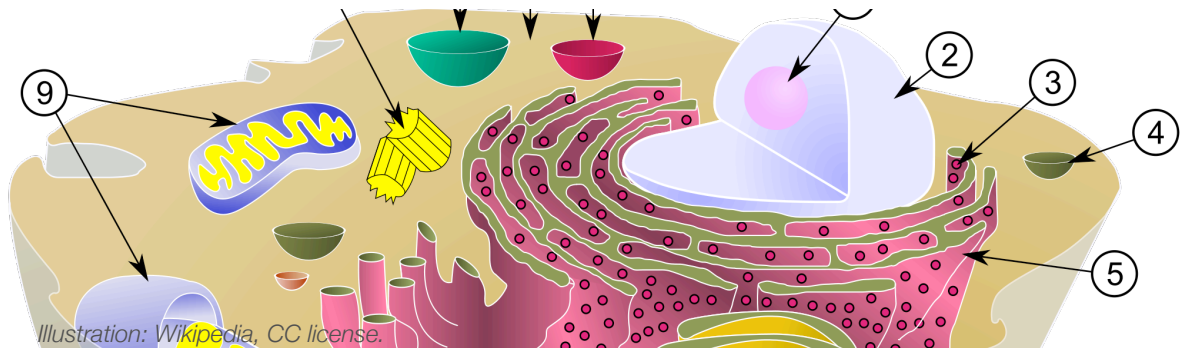
Word List

cell membrane
cell wall
chloroplast
chromosome
cytoplasm
DNA
endoplasmic reticulum
golgi body
lysosome
mitochondria
nucleus
organelle
ribosome
semi-permeable
vacuole
vesicle

Cell Structure Quiz

The following paragraph describes the parts of a cell. Fill in the blanks with the correct word.

A cell has many parts, called _____, each one of which has a special function. The _____ encloses the cell. It is _____, which means some substances pass through and some are blocked. The interior of the cell is filled with _____, which is a watery substance in which the other parts of the cell are suspended. The _____ convert glucose into energy the cell can use. The _____ is a network of tubes that transports material around the cell. The _____ of a cell contains the genetic material that controls the cell; this material is in the form of _____.



B2.1

use appropriate terminology
related to cells

Word List

cell membrane
cell wall
chloroplast
chromosome
cytoplasm
DNA
endoplasmic reticulum
golgi body
lysosome
mitochondria
nucleus
organelle
ribosome
semi-permeable
vacuole
vessicle

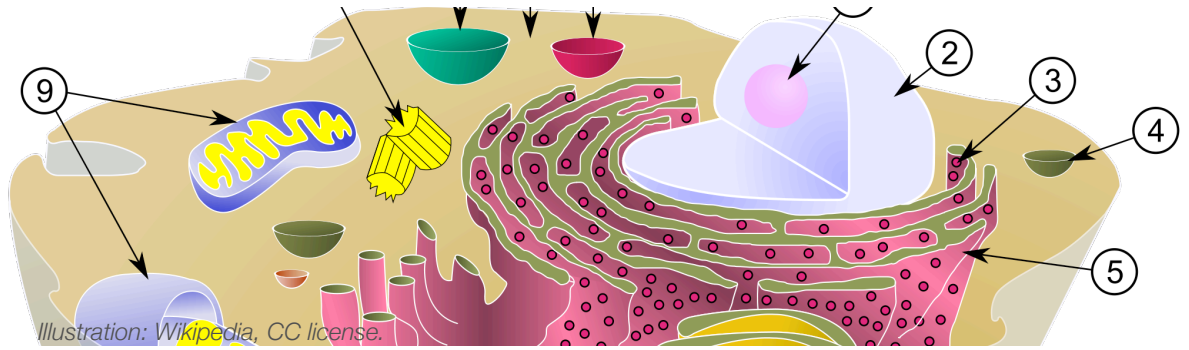
Cell Structure Quiz

The following paragraph describes some of the parts of a cell. Fill in the blanks with the correct word.

A cell has many parts, called organelles, each one of which has a special function. The cell membrane encloses the cell. It is semi-permeable, which means some substances pass through and some are blocked. The interior of the cell is filled with cytoplasm, which is a watery substance in which the other parts of the cell are suspended. The mitochondria convert glucose into energy the cell can use. The endoplasmic reticulum is a network of tubes that transports material around the cell. The nucleus of a cell contains the genetic material that controls the cell; this material is in the form of DNA (or chromosomes).

Name Section

Biology



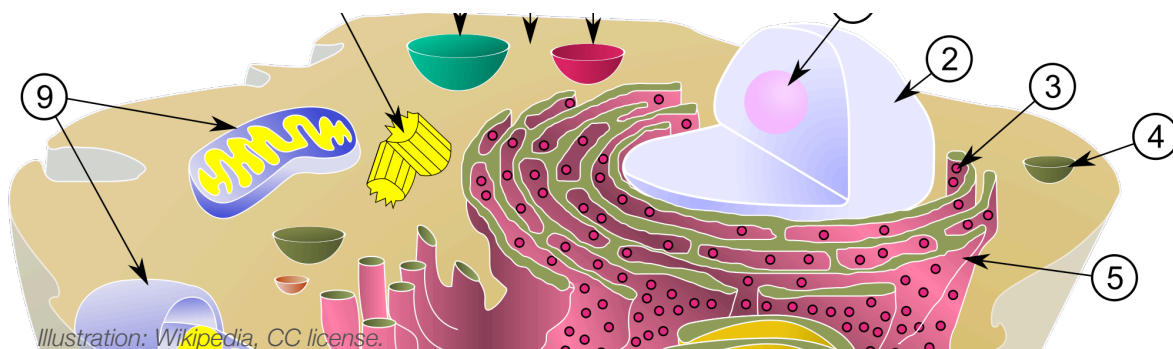
B2.1

use appropriate terminology
related to cells

Cell Structure Quiz

The following paragraph describes the parts of a cell. Fill in the blanks with the correct word.

A cell has many parts, called _____, each one of which has a special function. The _____ encloses the cell. It is _____, which means some substances pass through and some are blocked. The interior of the cell is filled with _____, which is a watery substance in which the other parts of the cell are suspended. The _____ convert glucose into energy the cell can use. The _____ is a network of tubes that transports material around the cell. The _____ of a cell contains the genetic material that controls the cell; this material is in the form of _____.



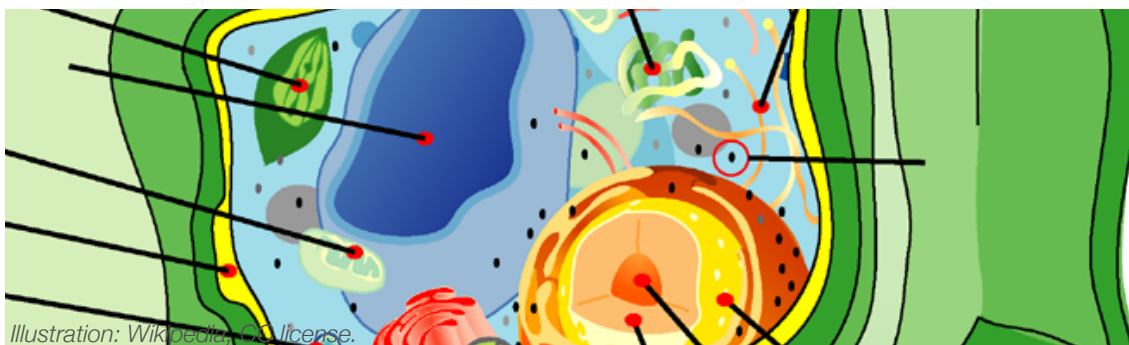
Cell Structure Quiz

B2.1

use appropriate terminology
related to cells

The following paragraph describes some of the parts of a cell. Fill in the blanks with the correct word.

A cell has many parts, called organelles, each one of which has a special function. The cell membrane encloses the cell. It is semi-permeable, which means some substances pass through and some are blocked. The interior of the cell is filled with cytoplasm, which is a watery substance in which the other parts of the cell are suspended. The mitochondria convert glucose into energy the cell can use. The endoplasmic reticulum is a network of tubes that transports material around the cell. The nucleus of a cell contains the genetic material that controls the cell; this material is in the form of DNA (or chromosomes).

**B2.1**

use appropriate terminology
related to cells

Word List

cell membrane
cell wall
chloroplast
chromosome
cytoplasm
DNA
endoplasmic reticulum
golgi body
lysosome
mitochondria
nucleus
nuclear membrane
organelle
ribosome
semi-permeable
vacuole
vesicle

Cell Structure Quiz

The following paragraph describes the parts of a cell. Fill in the blanks with the correct word.

A cell has many organelles suspended in _____

and is enclosed by a _____, which is

_____, meaning some substances pass through

and some are blocked. A plant cell is also surrounded by a

_____ which provides protection and support.

Plant cells have a large central _____ which also

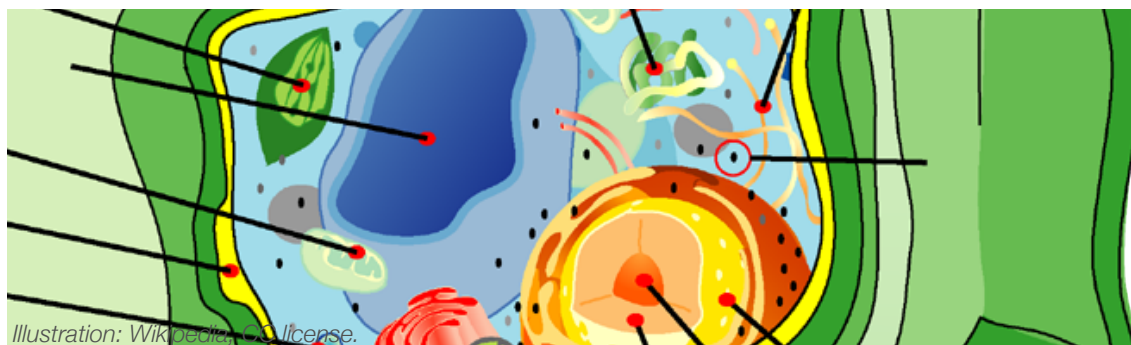
helps support the cell. Like animal cells, plant cells have

_____ which convert glucose to energy, but many

plant cells also have _____ which make glucose

out of inorganic chemicals and light energy. Chromosomes are

found in the _____.



B2.1

use appropriate terminology
related to cells

Word List

cell membrane
cell wall
chloroplast
chromosome
cytoplasm
DNA
endoplasmic reticulum
golgi body
lysosome
mitochondria
nucleus
nuclear membrane
organelle
ribosome
semi-permeable
vacuole
vesicle

Cell Structure Quiz

The following paragraph describes the parts of a cell. Fill in the blanks with the correct word.

A cell has many organelles suspended in cytoplasm

and is enclosed by a cell membrane, which is

semi-permeable, meaning some substances pass through

and some are blocked. A plant cell is also surrounded by a

cell wall which provides protection and support.

Plant cells have a large central vacuole which also

helps support the cell. Like animal cells, plant cells have

mitochondria which convert glucose to energy, but many

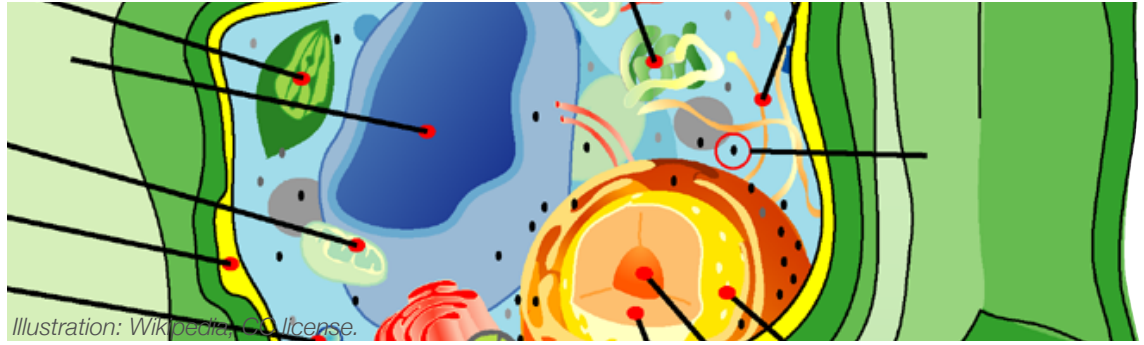
plant cells also have chloroplasts which make glucose

out of inorganic chemicals and light energy. Chromosomes are

found in the nucleus.

B2.1

use appropriate terminology
related to cells



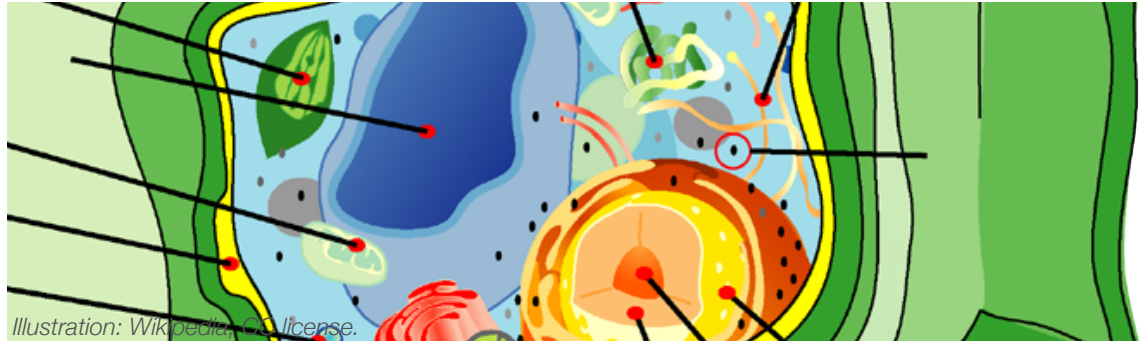
Cell Structure Quiz

The following paragraph describes the parts of a cell. Fill in the blanks with the correct word.

A cell has many organelles suspended in _____
and is enclosed by a _____, which is
_____, meaning some substances pass through
and some are blocked. A plant cell is also surrounded by a
_____ which provides protection and support.
Plant cells have a large central _____ which also
helps support the cell. Like animal cells, plant cells have
_____ which convert glucose to energy, but many
plant cells also have _____ which make glucose
out of inorganic chemicals and light energy. Chromosomes are
found in the _____.

B2.1

use appropriate terminology
related to cells



Cell Structure Quiz

The following paragraph describes the parts of a cell. Fill in the blanks with the correct word.

A cell has many organelles suspended in cytoplasm

and is enclosed by a cell membrane, which is

semi-permeable, meaning some substances pass through

and some are blocked. A plant cell is also surrounded by a

cell wall which provides protection and support.

Plant cells have a large central vacuole which also

helps support the cell. Like animal cells, plant cells have

mitochondria which convert glucose to energy, but many

plant cells also have chloroplasts which make glucose

out of inorganic chemicals and light energy. Chromosomes are

found in the nucleus.