

Illustration: Wikipedia, CC license.

**B2.1**

use appropriate terminology  
related to cells

**Word List**

cell membrane  
cell wall  
chloroplast  
chromosome  
cytoplasm  
DNA  
endoplasmic reticulum  
golgi body  
lysosome  
mitochondria  
nucleus  
organelle  
ribosome  
semi-permeable  
vacuole  
vesicle

## Cell Structure Cloze Exercise

The following paragraph describes the parts of a cell. Fill in the blanks with the correct word.

A cell has many parts, called \_\_\_\_\_, each one of which has a special function. The \_\_\_\_\_ encloses the cell. It is \_\_\_\_\_, which means some substances pass through and some are blocked. The interior of the cell is filled with \_\_\_\_\_, which is a watery substance in which the other parts of the cell are suspended. The \_\_\_\_\_ convert glucose into energy the cell can use. The \_\_\_\_\_ is a network of tubes that transports material around the cell. The \_\_\_\_\_ of a cell contains the genetic material that controls the cell; this material is in the form of \_\_\_\_\_.

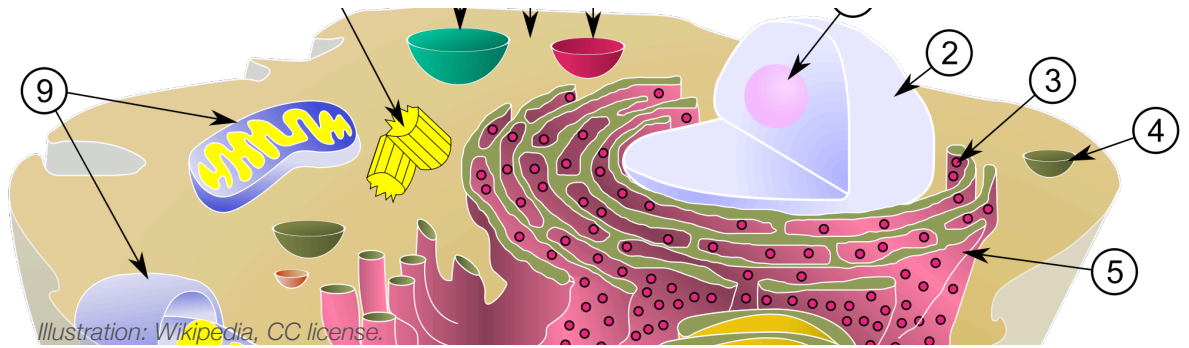


Illustration: Wikipedia, CC license.

## B2.1

use appropriate terminology  
related to cells

### Word List

cell membrane  
cell wall  
chloroplast  
chromosome  
cytoplasm  
DNA  
endoplasmic reticulum  
golgi body  
lysosome  
mitochondria  
nucleus  
organelle  
ribosome  
semi-permeable  
vacuole  
vessicle

## Cell Structure Cloze Exercise

The following paragraph describes some of the parts of a cell. Fill in the blanks with the correct word.

A cell has many parts, called organelles, each one of which has a special function. The cell membrane encloses the cell. It is semi-permeable, which means some substances pass through and some are blocked. The interior of the cell is filled with cytoplasm, which is a watery substance in which the other parts of the cell are suspended. The mitochondria convert glucose into energy the cell can use. The endoplasmic reticulum is a network of tubes that transports material around the cell. The nucleus of a cell contains the genetic material that controls the cell; this material is in the form of DNA (or chromosomes).

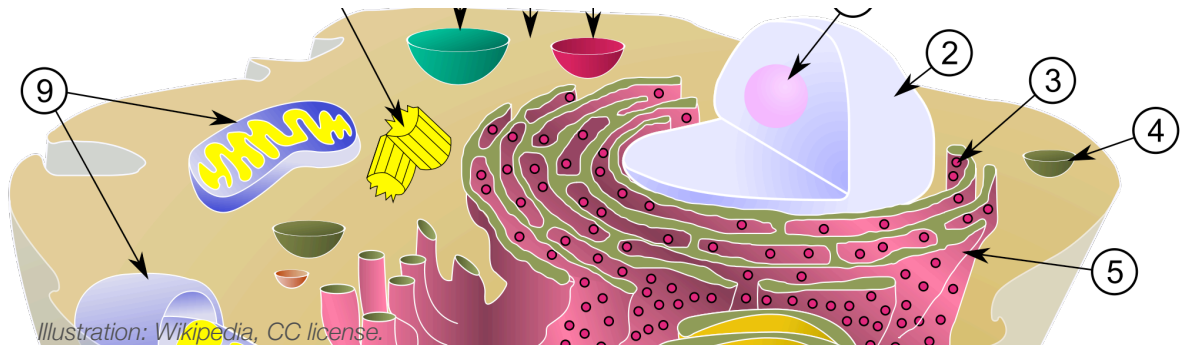
Name

Date

# Biology

## B2.1

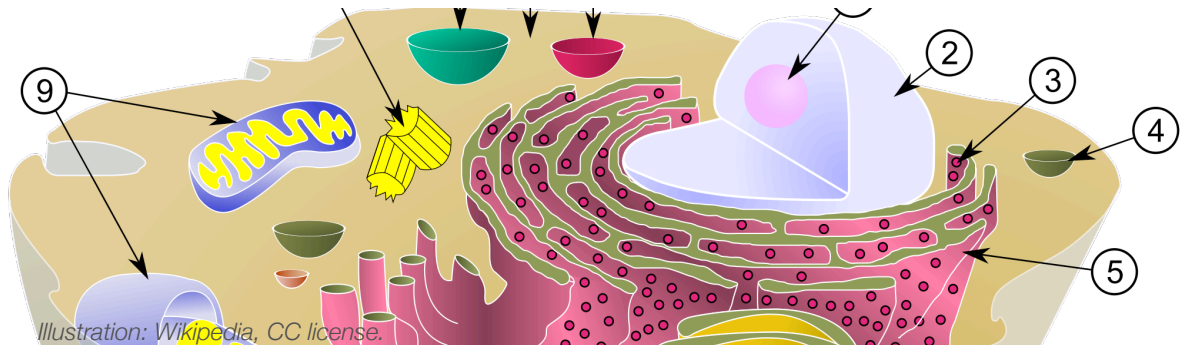
use appropriate terminology  
related to cells



## Cell Structure Cloze Exercise

The following paragraph describes the parts of a cell. Fill in the blanks with the correct word.

A cell has many parts, called \_\_\_\_\_, each one of which has a special function. The \_\_\_\_\_ encloses the cell. It is \_\_\_\_\_, which means some substances pass through and some are blocked. The interior of the cell is filled with \_\_\_\_\_, which is a watery substance in which the other parts of the cell are suspended. The \_\_\_\_\_ convert glucose into energy the cell can use. The \_\_\_\_\_ is a network of tubes that transports material around the cell. The \_\_\_\_\_ of a cell contains the genetic material that controls the cell; this material is in the form of \_\_\_\_\_.



## Cell Structure Cloze Exercise

### B2.1

use appropriate terminology  
related to cells

The following paragraph describes some of the parts of a cell. Fill in the blanks with the correct word.

A cell has many parts, called organelles, each one of which has a special function. The cell membrane encloses the cell. It is semi-permeable, which means some substances pass through and some are blocked. The interior of the cell is filled with cytoplasm, which is a watery substance in which the other parts of the cell are suspended. The mitochondria convert glucose into energy the cell can use. The endoplasmic reticulum is a network of tubes that transports material around the cell. The nucleus of a cell contains the genetic material that controls the cell; this material is in the form of DNA (or chromosomes).

Name

Date

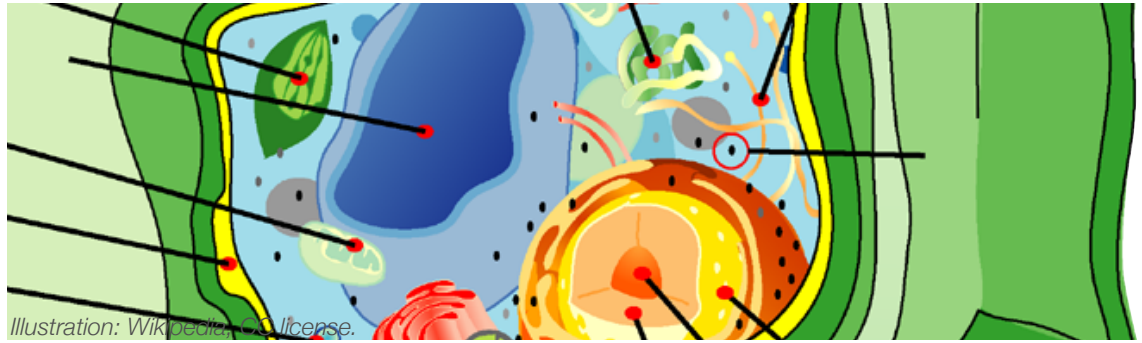
# Biology

## B2.1

use appropriate terminology  
related to cells

### Word List

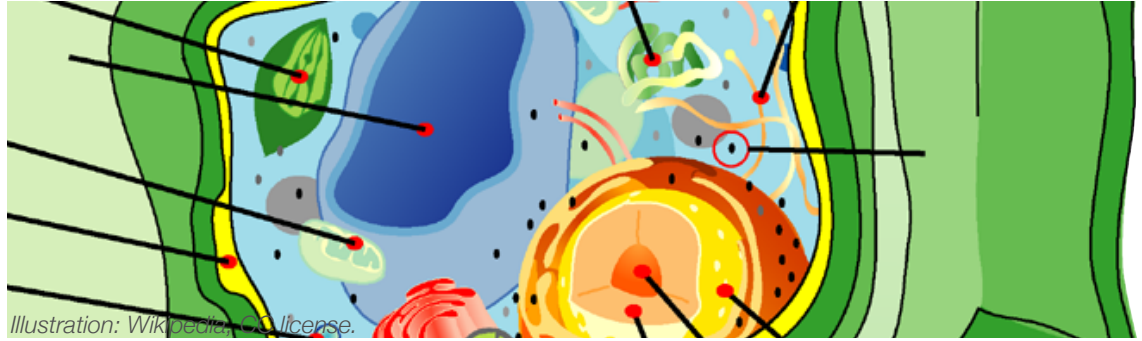
cell membrane  
cell wall  
chloroplast  
chromosome  
cytoplasm  
DNA  
endoplasmic reticulum  
golgi body  
lysosome  
mitochondria  
nucleus  
nuclear membrane  
organelle  
ribosome  
semi-permeable  
vacuole  
vesicle



## Cell Structure Cloze Exercise

The following paragraph describes the parts of a cell. Fill in the blanks with the correct word.

A cell has many organelles suspended in \_\_\_\_\_  
and is enclosed by a \_\_\_\_\_, which is  
\_\_\_\_\_, meaning some substances pass through  
and some are blocked. A plant cell is also surrounded by a  
\_\_\_\_\_ which provides protection and support.  
Plant cells have a large central \_\_\_\_\_ which also  
helps support the cell. Like animal cells, plant cells have  
\_\_\_\_\_ which convert glucose to energy, but many  
plant cells also have \_\_\_\_\_ which make glucose  
out of inorganic chemicals and light energy. Chromosomes are  
found in the \_\_\_\_\_.



## B2.1

use appropriate terminology  
related to cells

## Word List

cell membrane  
cell wall  
chloroplast  
chromosome  
cytoplasm  
DNA  
endoplasmic reticulum  
golgi body  
lysosome  
mitochondria  
nucleus  
nuclear membrane  
organelle  
ribosome  
semi-permeable  
vacuole  
vesicle

## Cell Structure Cloze Exercise

The following paragraph describes the parts of a cell. Fill in the blanks with the correct word.

A cell has many organelles suspended in cytoplasm and is enclosed by a cell membrane, which is semi-permeable, meaning some substances pass through and some are blocked. A plant cell is also surrounded by a cell wall which provides protection and support. Plant cells have a large central vacuole which also helps support the cell. Like animal cells, plant cells have mitochondria which convert glucose to energy, but many plant cells also have chloroplasts which make glucose out of inorganic chemicals and light energy. Chromosomes are found in the nucleus.

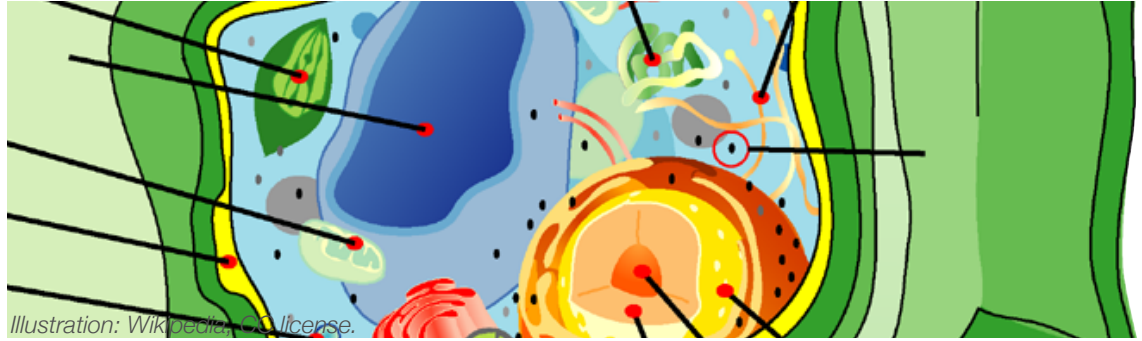
Name

Date

# Biology

## B2.1

use appropriate terminology  
related to cells



## Cell Structure Cloze Exercise

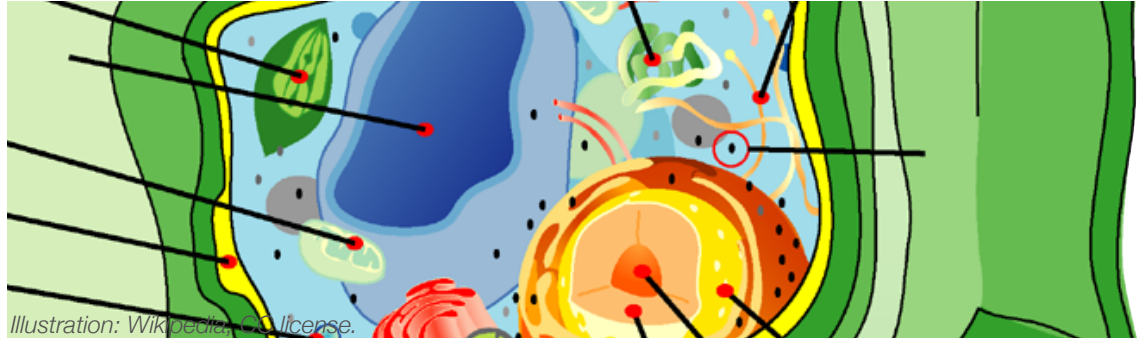
The following paragraph describes the parts of a cell. Fill in the blanks with the correct word.

A cell has many organelles suspended in \_\_\_\_\_  
and is enclosed by a \_\_\_\_\_, which is  
\_\_\_\_\_, meaning some substances pass through  
and some are blocked. A plant cell is also surrounded by a  
\_\_\_\_\_ which provides protection and support.  
Plant cells have a large central \_\_\_\_\_ which also  
helps support the cell. Like animal cells, plant cells have  
\_\_\_\_\_ which convert glucose to energy, but many  
plant cells also have \_\_\_\_\_ which make glucose  
out of inorganic chemicals and light energy. Chromosomes are  
found in the \_\_\_\_\_.



## B2.1

use appropriate terminology  
related to cells



## Cell Structure Cloze Exercise

The following paragraph describes the parts of a cell. Fill in the blanks with the correct word.

A cell has many organelles suspended in cytoplasm

and is enclosed by a cell membrane, which is

semi-permeable, meaning some substances pass through

and some are blocked. A plant cell is also surrounded by a

cell wall which provides protection and support.

Plant cells have a large central vacuole which also

helps support the cell. Like animal cells, plant cells have

mitochondria which convert glucose to energy, but many

plant cells also have chloroplasts which make glucose

out of inorganic chemicals and light energy. Chromosomes are

found in the nucleus.