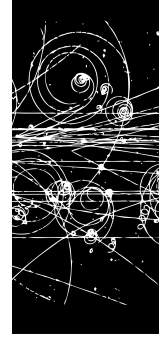
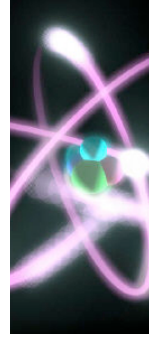
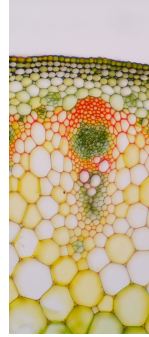
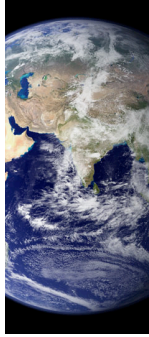


Name

Section

Date

## Biology



# Levels of **Organization** Quiz

Write the levels of organization from highest to lowest, and match the letter of the corresponding definition.

## Word Bank

atom  
 biosphere  
 cell  
 community  
 ecosystem  
 molecule  
 organ  
 organ system  
 organelle  
 organism  
 population  
 subatomic particle  
 tissue

Level	Definition

Letter	Definition
<b>A</b>	The tiniest part of an element that has all the properties of that element.
<b>B</b>	A structure composed of different tissues specialized to carry out a specific function.
<b>C</b>	A community of different species interacting with one another and with the abiotic environment.
<b>D</b>	Parts that make up the atom (protons, neutrons, and electrons).
<b>E</b>	A group of individuals of the same species living in a particular geographic area at the same time.
<b>F</b>	That part of Earth inhabited by plants and animals (all communities of living things on Earth).
<b>G</b>	Populations of all species living in a particular area at a particular time.
<b>H</b>	A group of cells that work together to perform a specialized task.
<b>I</b>	The basic microscopic part of all living things.
<b>J</b>	Specialized structures within the cell that perform particular functions.
<b>K</b>	The smallest part of a substance that has all the properties of the substance. Made up of more than one atom.
<b>L</b>	A single living thing.
<b>M</b>	A group of organs that have related functions.

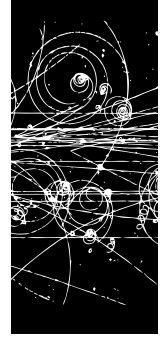
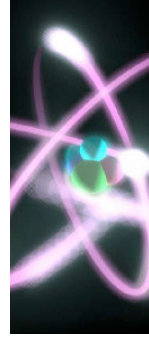
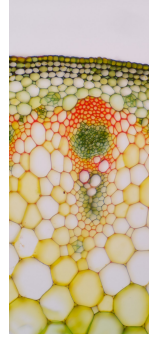
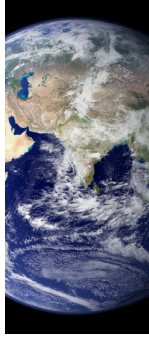
Name

answer key

Section

Date

## Biology



# Levels of Organization Quiz

Write the levels of organization from highest to lowest, and match the letter of the corresponding definition.

## Word Bank

atom

biosphere

cell

community

ecosystem

molecule

organ

organ system

organelle

organism

population

subatomic particle

tissue

Level	Definition
biosphere	F
ecosystem	C
community	G
population	E
organism	L
organ system	M
organ	B
tissue	H
cell	I
organelle	J
molecule	K
atom	A
subatomic particle	D

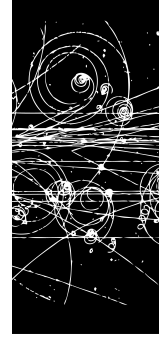
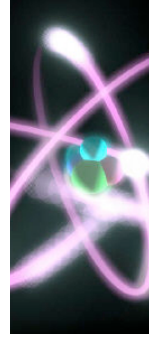
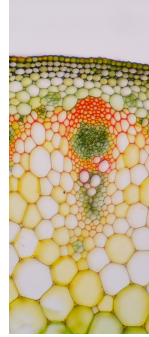
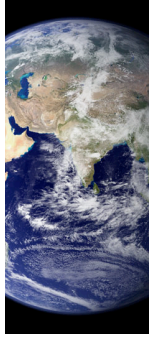
Letter	Definition
A	The tiniest part of an element that has all the properties of that element.
B	A structure composed of different tissues specialized to carry out a specific function.
C	A community of different species interacting with one another and with the abiotic environment.
D	Parts that make up the atom (protons, neutrons, and electrons).
E	A group of individuals of the same species living in a particular geographic area at the same time.
F	That part of Earth inhabited by plants and animals (all communities of living things on Earth).
G	Populations of all species living in a particular area at a particular time.
H	A group of cells that work together to perform a specialized task.
I	The basic microscopic part of all living things.
J	Specialized structures within the cell that perform particular functions.
K	The smallest part of a substance that has all the properties of the substance. Made up of more than one atom.
L	A single living thing.
M	A group of organs that have related functions.

Name

Section

Date

## Biology



# Levels of **Organization** Quiz

Write the levels of organization from highest to lowest, and match the letter of the corresponding definition.

Level	Definition

Letter	Definition
<b>A</b>	The tiniest part of an element that has all the properties of that element.
<b>B</b>	A structure composed of different tissues specialized to carry out a specific function.
<b>C</b>	A community of different species interacting with one another and with the abiotic environment.
<b>D</b>	Parts that make up the atom (protons, neutrons, and electrons).
<b>E</b>	A group of individuals of the same species living in a particular geographic area at the same time.
<b>F</b>	That part of Earth inhabited by plants and animals (all communities of living things on Earth).
<b>G</b>	Populations of all species living in a particular area at a particular time.
<b>H</b>	A group of cells that work together to perform a specialized task.
<b>I</b>	The basic microscopic part of all living things.
<b>J</b>	Specialized structures within the cell that perform particular functions.
<b>K</b>	The smallest part of a substance that has all the properties of the substance. Made up of more than one atom.
<b>L</b>	A single living thing.
<b>M</b>	A group of organs that have related functions.

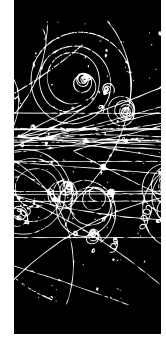
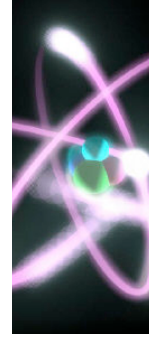
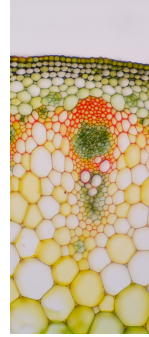
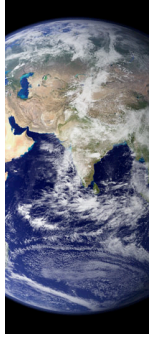
Name

answer key

Section

Date

## Biology



# Levels of Organization Quiz

Write the levels of organization from highest to lowest, and match the letter of the corresponding definition.

Level	Definition
biosphere	F
ecosystem	C
community	G
population	E
organism	L
organ system	M
organ	B
tissue	H
cell	I
organelle	J
molecule	K
atom	A
subatomic particle	D

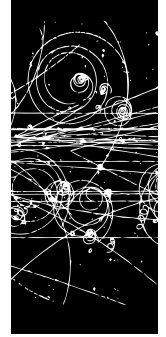
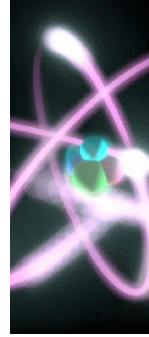
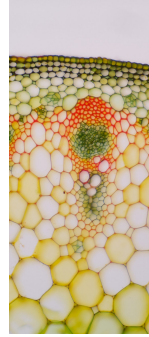
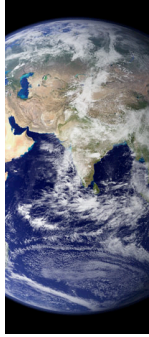
Letter	Definition
A	The tiniest part of an element that has all the properties of that element.
B	A structure composed of different tissues specialized to carry out a specific function.
C	A community of different species interacting with one another and with the abiotic environment.
D	Parts that make up the atom (protons, neutrons, and electrons).
E	A group of individuals of the same species living in a particular geographic area at the same time.
F	That part of Earth inhabited by plants and animals (all communities of living things on Earth).
G	Populations of all species living in a particular area at a particular time.
H	A group of cells that work together to perform a specialized task.
I	The basic microscopic part of all living things.
J	Specialized structures within the cell that perform particular functions.
K	The smallest part of a substance that has all the properties of the substance. Made up of more than one atom.
L	A single living thing.
M	A group of organs that have related functions.

Name

Section

Date

## Biology



# Levels of **Organization** Quiz

Write the levels of organization from highest to lowest, and match the letter of the corresponding definition.

## Word Bank

atom  
biosphere  
cell  
community  
ecosystem  
molecule  
organ  
organ system  
organelle  
organism  
population  
subatomic particle  
tissue

Level	Definition

Letter	Definition
<b>A</b>	The basic microscopic part of all living things.
<b>B</b>	The smallest part of a substance that has all the properties of the substance. Made up of more than one atom.
<b>C</b>	Specialized structures within the cell that perform particular functions.
<b>D</b>	A single living thing.
<b>E</b>	A group of organs that have related functions.
<b>F</b>	A community of different species interacting with one another and with the abiotic environment.
<b>G</b>	The tiniest part of an element that has all the properties of that element.
<b>H</b>	Populations of all species living in a particular area at a particular time.
<b>I</b>	Parts that make up the atom (protons, neutrons, and electrons).
<b>J</b>	A structure composed of different tissues specialized to carry out a specific function.
<b>K</b>	A group of cells that work together to perform a specialized task.
<b>L</b>	That part of Earth inhabited by plants and animals (all communities of living things on Earth).
<b>M</b>	A group of individuals of the same species living in a particular geographic area at the same time.



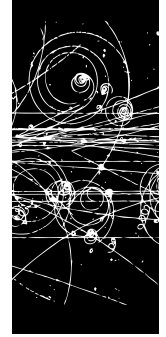
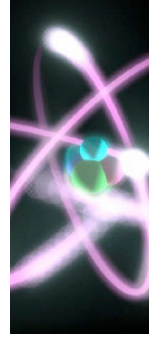
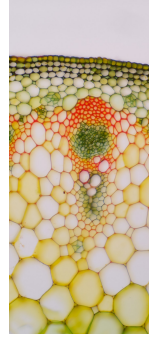
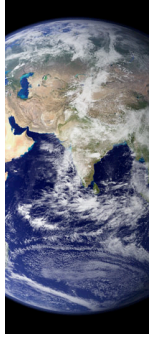
Name

answer key

Section

Date

## Biology



# Levels of Organization Quiz

Write the levels of organization from highest to lowest, and match the letter of the corresponding definition.

## Word Bank

atom

biosphere

cell

community

ecosystem

molecule

organ

organ system

organelle

organism

population

subatomic particle

tissue

Level	Definition
biosphere	L
ecosystem	F
community	H
population	M
organism	D
organ system	E
organ	J
tissue	K
cell	A
organelle	C
molecule	B
atom	G
subatomic particle	I

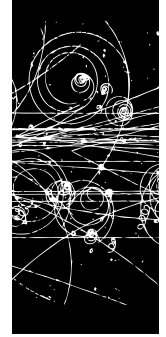
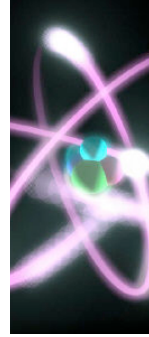
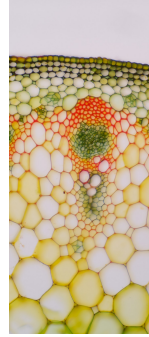
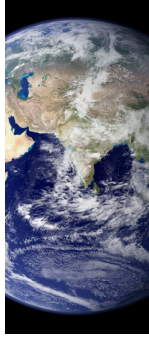
Letter	Definition
A	The basic microscopic part of all living things.
B	The smallest part of a substance that has all the properties of the substance. Made up of more than one atom.
C	Specialized structures within the cell that perform particular functions.
D	A single living thing.
E	A group of organs that have related functions.
F	A community of different species interacting with one another and with the abiotic environment.
G	The tiniest part of an element that has all the properties of that element.
H	Populations of all species living in a particular area at a particular time.
I	Parts that make up the atom (protons, neutrons, and electrons).
J	A structure composed of different tissues specialized to carry out a specific function.
K	A group of cells that work together to perform a specialized task.
L	That part of Earth inhabited by plants and animals (all communities of living things on Earth).
M	A group of individuals of the same species living in a particular geographic area at the same time.

Name

Section

Date

## Biology



# Levels of **Organization** Quiz

Write the levels of organization from highest to lowest, and match the letter of the corresponding definition.

Level	Definition

Letter	Definition
<b>A</b>	The basic microscopic part of all living things.
<b>B</b>	The smallest part of a substance that has all the properties of the substance. Made up of more than one atom.
<b>C</b>	Specialized structures within the cell that perform particular functions.
<b>D</b>	A single living thing.
<b>E</b>	A group of organs that have related functions.
<b>F</b>	A community of different species interacting with one another and with the abiotic environment.
<b>G</b>	The tiniest part of an element that has all the properties of that element.
<b>H</b>	Populations of all species living in a particular area at a particular time.
<b>I</b>	Parts that make up the atom (protons, neutrons, and electrons).
<b>J</b>	A structure composed of different tissues specialized to carry out a specific function.
<b>K</b>	A group of cells that work together to perform a specialized task.
<b>L</b>	That part of Earth inhabited by plants and animals (all communities of living things on Earth).
<b>M</b>	A group of individuals of the same species living in a particular geographic area at the same time.

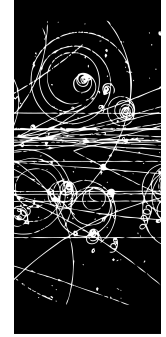
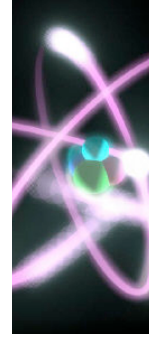
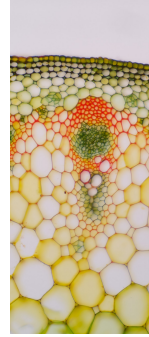
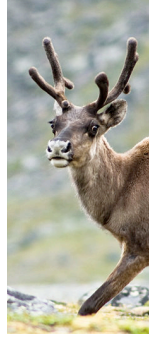
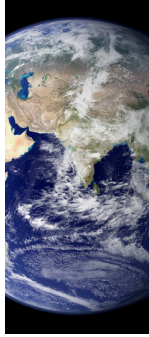
Name

answer key

Section

Date

## Biology



# Levels of Organization Quiz

Write the levels of organization from highest to lowest, and match the letter of the corresponding definition.

Level	Definition
biosphere	L
ecosystem	F
community	H
population	M
organism	D
organ system	E
organ	J
tissue	K
cell	A
organelle	C
molecule	B
atom	G
subatomic particle	I

Letter	Definition
A	The basic microscopic part of all living things.
B	The smallest part of a substance that has all the properties of the substance. Made up of more than one atom.
C	Specialized structures within the cell that perform particular functions.
D	A single living thing.
E	A group of organs that have related functions.
F	A community of different species interacting with one another and with the abiotic environment.
G	The tiniest part of an element that has all the properties of that element.
H	Populations of all species living in a particular area at a particular time.
I	Parts that make up the atom (protons, neutrons, and electrons).
J	A structure composed of different tissues specialized to carry out a specific function.
K	A group of cells that work together to perform a specialized task.
L	That part of Earth inhabited by plants and animals (all communities of living things on Earth).
M	A group of individuals of the same species living in a particular geographic area at the same time.

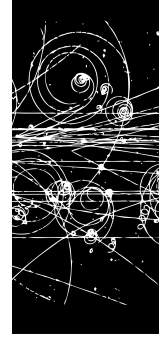
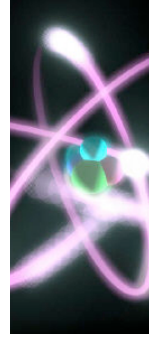
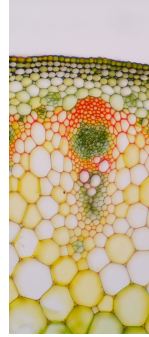
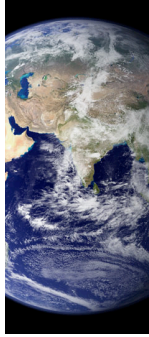


Name

Section

Date

## Biology



# Levels of **Organization** Quiz

Write the levels of organization from highest to lowest, and match the letter of the corresponding definition.

## Word Bank

atom  
biosphere  
cell  
community  
ecosystem  
molecule  
organ  
organ system  
organelle  
organism  
population  
subatomic particle  
tissue

Level	Definition

Letter	Definition
<b>A</b>	The tiniest part of an element that has all the properties of that element.
<b>B</b>	That part of Earth inhabited by plants and animals (all communities of living things on Earth).
<b>C</b>	The basic microscopic part of all living things.
<b>D</b>	A group of organs that have related functions.
<b>E</b>	A group of cells that work together to perform a specialized task.
<b>F</b>	The smallest part of a substance that has all the properties of the substance. Made up of more than one atom.
<b>G</b>	Specialized structures within the cell that perform particular functions.
<b>H</b>	Populations of all species living in a particular area at a particular time.
<b>I</b>	Parts that make up the atom (protons, neutrons, and electrons).
<b>J</b>	A group of individuals of the same species living in a particular geographic area at the same time.
<b>K</b>	A structure composed of different tissues specialized to carry out a specific function.
<b>L</b>	A community of different species interacting with one another and with the abiotic environment.
<b>M</b>	A single living thing.

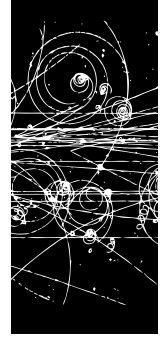
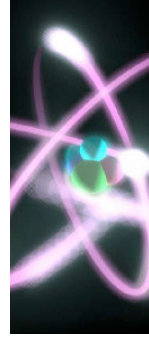
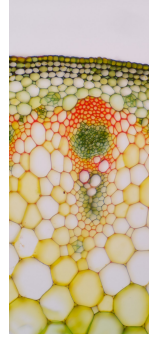
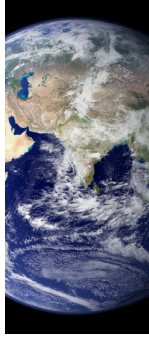
Name

answer key

Section

Date

## Biology



# Levels of Organization Quiz

Write the levels of organization from highest to lowest, and match the letter of the corresponding definition.

## Word Bank

atom

biosphere

cell

community

ecosystem

molecule

organ

organ system

organelle

organism

population

subatomic particle

tissue

Level	Definition
biosphere	B
ecosystem	L
community	H
population	J
organism	M
organ system	D
organ	K
tissue	E
cell	C
organelle	G
molecule	F
atom	A
subatomic particle	I

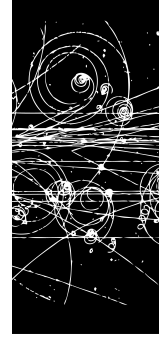
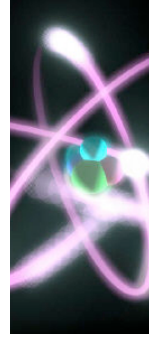
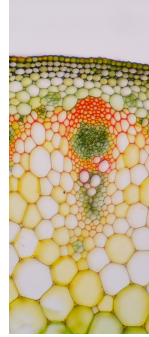
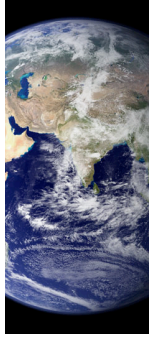
Letter	Definition
A	The tiniest part of an element that has all the properties of that element.
B	That part of Earth inhabited by plants and animals (all communities of living things on Earth).
C	The basic microscopic part of all living things.
D	A group of organs that have related functions.
E	A group of cells that work together to perform a specialized task.
F	The smallest part of a substance that has all the properties of the substance. Made up of more than one atom.
G	Specialized structures within the cell that perform particular functions.
H	Populations of all species living in a particular area at a particular time.
I	Parts that make up the atom (protons, neutrons, and electrons).
J	A group of individuals of the same species living in a particular geographic area at the same time.
K	A structure composed of different tissues specialized to carry out a specific function.
L	A community of different species interacting with one another and with the abiotic environment.
M	A single living thing.

Name

Section

Date

## Biology



# Levels of **Organization** Quiz

Write the levels of organization from highest to lowest, and match the letter of the corresponding definition.

Level	Definition

Letter	Definition
<b>A</b>	The tiniest part of an element that has all the properties of that element.
<b>B</b>	That part of Earth inhabited by plants and animals (all communities of living things on Earth).
<b>C</b>	The basic microscopic part of all living things.
<b>D</b>	A group of organs that have related functions.
<b>E</b>	A group of cells that work together to perform a specialized task.
<b>F</b>	The smallest part of a substance that has all the properties of the substance. Made up of more than one atom.
<b>G</b>	Specialized structures within the cell that perform particular functions.
<b>H</b>	Populations of all species living in a particular area at a particular time.
<b>I</b>	Parts that make up the atom (protons, neutrons, and electrons).
<b>J</b>	A group of individuals of the same species living in a particular geographic area at the same time.
<b>K</b>	A structure composed of different tissues specialized to carry out a specific function.
<b>L</b>	A community of different species interacting with one another and with the abiotic environment.
<b>M</b>	A single living thing.

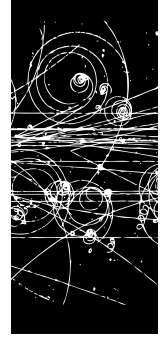
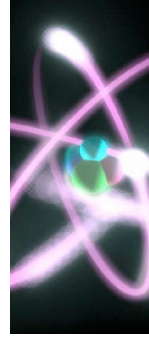
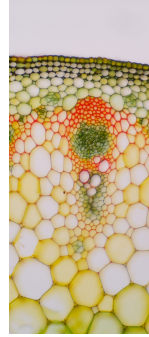
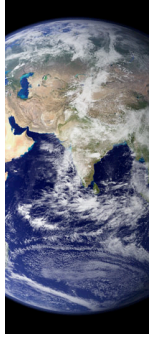
Name

answer key

Section

Date

## Biology



# Levels of Organization Quiz

Write the levels of organization from highest to lowest, and match the letter of the corresponding definition.

Level	Definition
biosphere	B
ecosystem	L
community	H
population	J
organism	M
organ system	D
organ	K
tissue	E
cell	C
organelle	G
molecule	F
atom	A
subatomic particle	I

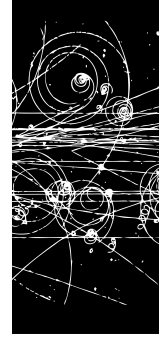
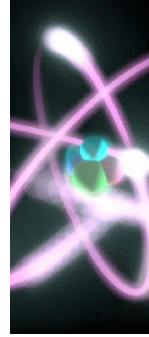
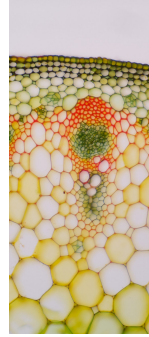
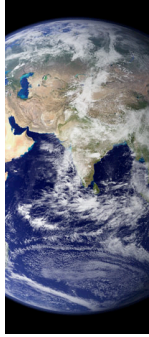
Letter	Definition
A	The tiniest part of an element that has all the properties of that element.
B	That part of Earth inhabited by plants and animals (all communities of living things on Earth).
C	The basic microscopic part of all living things.
D	A group of organs that have related functions.
E	A group of cells that work together to perform a specialized task.
F	The smallest part of a substance that has all the properties of the substance. Made up of more than one atom.
G	Specialized structures within the cell that perform particular functions.
H	Populations of all species living in a particular area at a particular time.
I	Parts that make up the atom (protons, neutrons, and electrons).
J	A group of individuals of the same species living in a particular geographic area at the same time.
K	A structure composed of different tissues specialized to carry out a specific function.
L	A community of different species interacting with one another and with the abiotic environment.
M	A single living thing.

Name

Section

Date

## Biology



# Levels of **Organization** Quiz

Write the levels of organization from highest to lowest, and match the letter of the corresponding definition.

## Word Bank

atom  
biosphere  
cell  
community  
ecosystem  
molecule  
organ  
organ system  
organelle  
organism  
population  
subatomic particle  
tissue

Level	Definition

Letter	Definition
<b>A</b>	The smallest part of a substance that has all the properties of the substance. Made up of more than one atom.
<b>B</b>	A single living thing.
<b>C</b>	The basic microscopic part of all living things.
<b>D</b>	The tiniest part of an element that has all the properties of that element.
<b>E</b>	A structure composed of different tissues specialized to carry out a specific function.
<b>F</b>	A group of individuals of the same species living in a particular geographic area at the same time.
<b>G</b>	Specialized structures within the cell that perform particular functions.
<b>H</b>	Parts that make up the atom (protons, neutrons, and electrons).
<b>I</b>	That part of Earth inhabited by plants and animals (all communities of living things on Earth).
<b>J</b>	A community of different species interacting with one another and with the abiotic environment.
<b>K</b>	A group of organs that have related functions.
<b>L</b>	A group of cells that work together to perform a specialized task.
<b>M</b>	Populations of all species living in a particular area at a particular time.



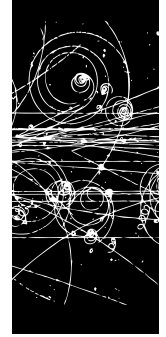
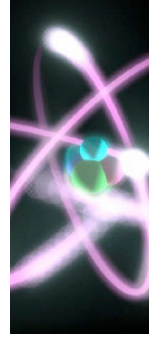
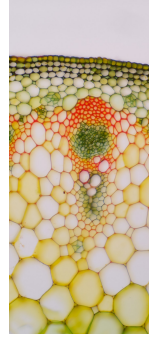
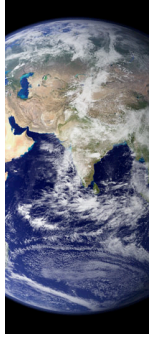
Name

answer key

Section

Date

## Biology



# Levels of Organization Quiz

Write the levels of organization from highest to lowest, and match the letter of the corresponding definition.

## Word Bank

atom

biosphere

cell

community

ecosystem

molecule

organ

organ system

organelle

organism

population

subatomic particle

tissue

Level	Definition
biosphere	I
ecosystem	J
community	M
population	F
organism	B
organ system	K
organ	E
tissue	L
cell	C
organelle	G
molecule	A
atom	D
subatomic particle	H

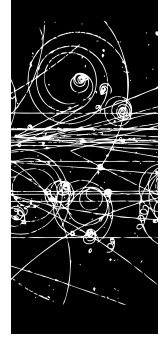
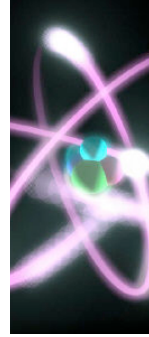
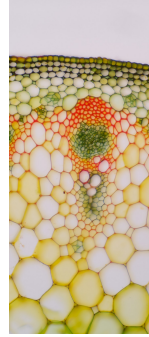
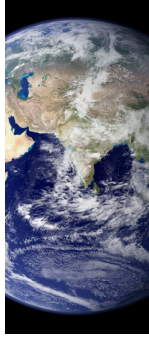
Letter	Definition
A	The smallest part of a substance that has all the properties of the substance. Made up of more than one atom.
B	A single living thing.
C	The basic microscopic part of all living things.
D	The tiniest part of an element that has all the properties of that element.
E	A structure composed of different tissues specialized to carry out a specific function.
F	A group of individuals of the same species living in a particular geographic area at the same time.
G	Specialized structures within the cell that perform particular functions.
H	Parts that make up the atom (protons, neutrons, and electrons).
I	That part of Earth inhabited by plants and animals (all communities of living things on Earth).
J	A community of different species interacting with one another and with the abiotic environment.
K	A group of organs that have related functions.
L	A group of cells that work together to perform a specialized task.
M	Populations of all species living in a particular area at a particular time.

Name

Section

Date

## Biology



# Levels of **Organization** Quiz

Write the levels of organization from highest to lowest, and match the letter of the corresponding definition.

Level	Definition

Letter	Definition
<b>A</b>	The smallest part of a substance that has all the properties of the substance. Made up of more than one atom.
<b>B</b>	A single living thing.
<b>C</b>	The basic microscopic part of all living things.
<b>D</b>	The tiniest part of an element that has all the properties of that element.
<b>E</b>	A structure composed of different tissues specialized to carry out a specific function.
<b>F</b>	A group of individuals of the same species living in a particular geographic area at the same time.
<b>G</b>	Specialized structures within the cell that perform particular functions.
<b>H</b>	Parts that make up the atom (protons, neutrons, and electrons).
<b>I</b>	That part of Earth inhabited by plants and animals (all communities of living things on Earth).
<b>J</b>	A community of different species interacting with one another and with the abiotic environment.
<b>K</b>	A group of organs that have related functions.
<b>L</b>	A group of cells that work together to perform a specialized task.
<b>M</b>	Populations of all species living in a particular area at a particular time.

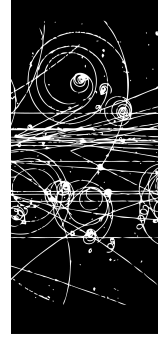
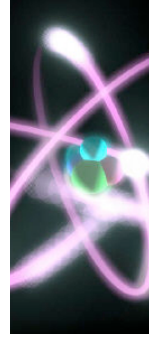
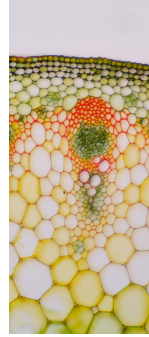
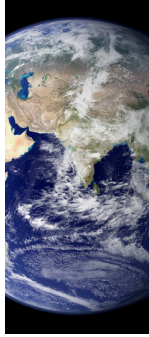
Name

answer key

Section

Date

## Biology



# Levels of Organization Quiz

Write the levels of organization from highest to lowest, and match the letter of the corresponding definition.

Level	Definition
biosphere	I
ecosystem	J
community	M
population	F
organism	B
organ system	K
organ	E
tissue	L
cell	C
organelle	G
molecule	A
atom	D
subatomic particle	H

Letter	Definition
A	The smallest part of a substance that has all the properties of the substance. Made up of more than one atom.
B	A single living thing.
C	The basic microscopic part of all living things.
D	The tiniest part of an element that has all the properties of that element.
E	A structure composed of different tissues specialized to carry out a specific function.
F	A group of individuals of the same species living in a particular geographic area at the same time.
G	Specialized structures within the cell that perform particular functions.
H	Parts that make up the atom (protons, neutrons, and electrons).
I	That part of Earth inhabited by plants and animals (all communities of living things on Earth).
J	A community of different species interacting with one another and with the abiotic environment.
K	A group of organs that have related functions.
L	A group of cells that work together to perform a specialized task.
M	Populations of all species living in a particular area at a particular time.