

B2.1

use appropriate terminology
related to animal systems

Parts of the **Circulatory System**

Match the descriptions with the parts of the circulatory system.

____ blood

____ red blood cell

____ white blood cell

____ platelet

____ plasma

____ heart

____ blood vessels

____ artery

____ vein

____ capillary

- A. a thick-walled blood vessel that carries blood away from the heart
- B. a type of connective tissue that circulates throughout the body
- C. a network of tubes throughout that body that transport blood
- D. a tiny thin-walled blood vessel that enables the exchange of gases, nutrients, and wastes between the blood and the body tissues
- E. the organ that pumps blood around the body
- F. a protein-rich liquid that carries blood cells along
- G. very small cells that help blood clot
- H. cells that transport oxygen
- I. a blood vessel that returns blood to the heart
- J. cells that fight infection

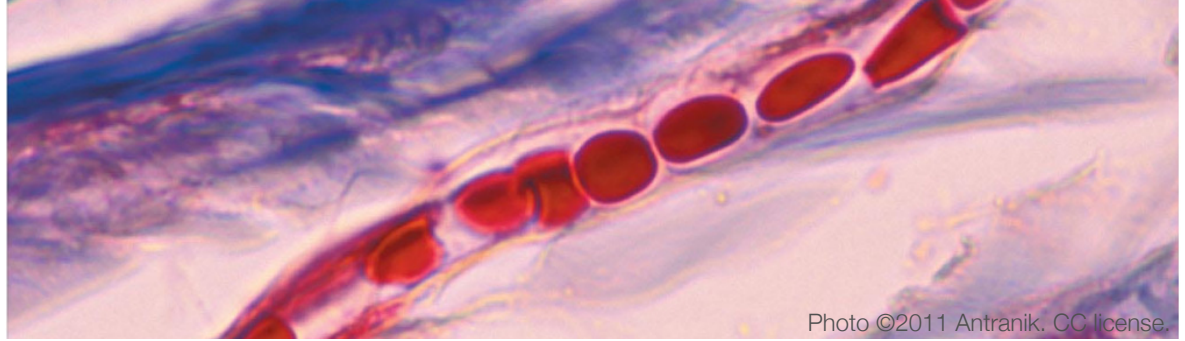


Photo ©2011 Antranik, CC license.

B2.1

use appropriate terminology
related to animal systems

Parts of the **Circulatory System**

Match the descriptions with the parts of the circulatory system.

B blood

H red blood cell

J white blood cell

G platelet

F plasma

E heart

C blood vessels

A artery

I vein

D capillary

- A. a thick-walled blood vessel that carries blood away from the heart
- B. a type of connective tissue that circulates throughout the body
- C. a network of tubes throughout that body that transport blood
- D. a tiny thin-walled blood vessel that enables the exchange of gases, nutrients, and wastes between the blood and the body tissues
- E. the organ that pumps blood around the body
- F. a protein-rich liquid that carries blood cells along
- G. very small cells that help blood clot
- H. cells that transport oxygen
- I. a blood vessel that returns blood to the heart
- J. cells that fight infection

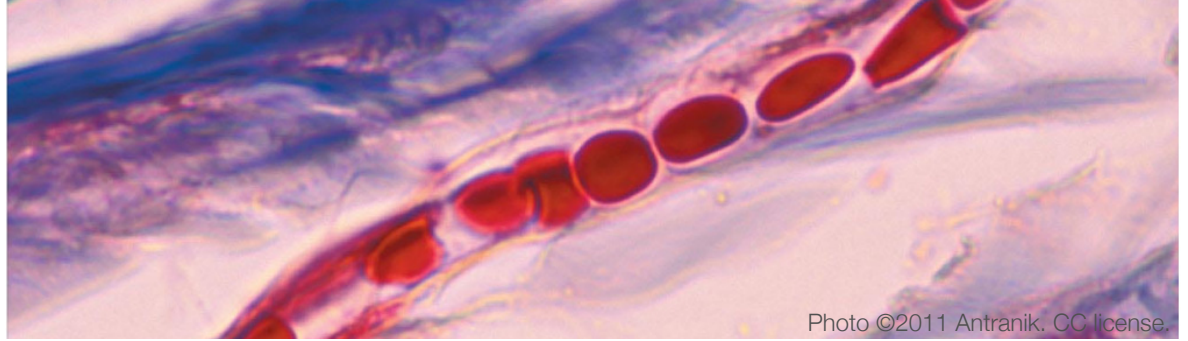


Photo ©2011 Antranik, CC license.

B2.1

use appropriate terminology
related to animal systems

Parts of the **Circulatory System**

Match the descriptions with the parts of the circulatory system.

- | | |
|-----------------------|-------------------------------------------------------------------------------------------------------------------------------------|
| ____ blood | A. the organ that pumps blood around the body |
| ____ red blood cell | B. very small cells that help blood clot |
| ____ white blood cell | C. cells that transport oxygen |
| ____ platelet | D. a thick-walled blood vessel that carries blood away from the heart |
| ____ plasma | E. a type of connective tissue that circulates throughout the body |
| ____ heart | F. a blood vessel that returns blood to the heart |
| ____ blood vessels | G. a network of tubes throughout that body that transport blood |
| ____ artery | H. a tiny thin-walled blood vessel that enables the exchange of gases, nutrients, and wastes between the blood and the body tissues |
| ____ vein | I. a protein-rich liquid that carries blood cells along |
| ____ capillary | J. cells that fight infection |

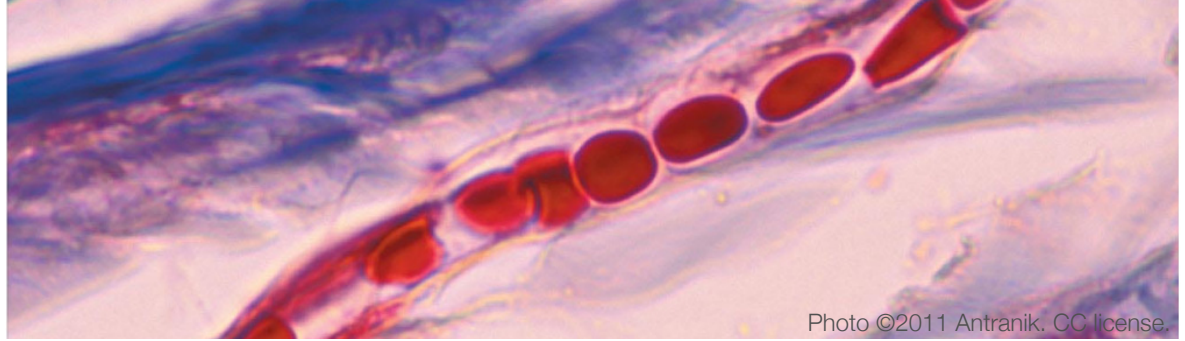


Photo ©2011 Antranik, CC license.

B2.1

use appropriate terminology
related to animal systems

Parts of the **Circulatory System**

Match the descriptions with the parts of the circulatory system.

E blood

C red blood cell

J white blood cell

B platelet

I plasma

A heart

G blood vessels

D artery

F vein

H capillary

- A. the organ that pumps blood around the body
- B. very small cells that help blood clot
- C. cells that transport oxygen
- D. a thick-walled blood vessel that carries blood away from the heart
- E. a type of connective tissue that circulates throughout the body
- F. a blood vessel that returns blood to the heart
- G. a network of tubes throughout that body that transport blood
- H. a tiny thin-walled blood vessel that enables the exchange of gases, nutrients, and wastes between the blood and the body tissues
- I. a protein-rich liquid that carries blood cells along
- J. cells that fight infection



Photo © J. Mason. CC license.

B2.1

use appropriate terminology
related to animal systems

Parts of the Digestive System

Match the descriptions with the parts of the digestive system.

____anus

____digestive tract

____esophagus

____large intestine

____liver

____mouth

____pancreas

____small intestine

____stomach

____villi

- A. the first part of the digestive tract, where food is mechanically and chemically broken down
- B. an organ that holds food and further digests it with enzymes and acid
- C. small protrusions lining the intestines that increase surface area to speed absorption of nutrients
- D. an organ that produces bile, which aids in digesting fats
- E. a muscular tube connecting the mouth and stomach
- F. the narrower part of the intestines, where most digestion occurs
- G. a long tube with an opening at each end, where food is digested; made up of several organs
- H. the wider part of the intestines, where water is absorbed
- I. an organ that produces insulin
- J. the last part of the digestive tract, where feces emerges



B2.1

use appropriate terminology
related to animal systems

Parts of the Digestive System

Match the descriptions with the parts of the digestive system.

J anus

G digestive tract

E esophagus

H large intestine

D liver

A mouth

I pancreas

F small intestine

B stomach

C villi

- A. the first part of the digestive tract, where food is mechanically and chemically broken down
- B. an organ that holds food and further digests it with enzymes and acid
- C. small protrusions lining the intestines that increase surface area to speed absorption of nutrients
- D. an organ that produces bile, which aids in digesting fats
- E. a muscular tube connecting the mouth and stomach
- F. the narrower part of the intestines, where most digestion occurs
- G. a long tube with an opening at each end, where food is digested; made up of several organs
- H. the wider part of the intestines, where water is absorbed
- I. an organ that produces insulin
- J. the last part of the digestive tract, where feces emerges

B2.1

use appropriate terminology
related to animal systems



Parts of the Digestive System

Match the descriptions with the parts of the digestive system.

____anus

____digestive tract

____esophagus

____large intestine

____liver

____mouth

____pancreas

____small intestine

____stomach

____villi

- A. small protrusions lining the intestines that increase surface area to speed absorption of nutrients
- B. the narrower part of the intestines, where most digestion occurs
- C. the wider part of the intestines, where water is absorbed
- D. a muscular tube connecting the mouth and stomach
- E. an organ that produces insulin
- F. the first part of the digestive tract, where food is mechanically and chemically broken down
- G. an organ that holds food and further digests it with enzymes and acid
- H. an organ that produces bile, which aids in digesting fats
- I. a long tube with an opening at each end, where food is digested; made up of several organs
- J. the last part of the digestive tract, where feces emerges



Photo © J. Mason. CC license.

B2.1

use appropriate terminology
related to animal systems

Parts of the Digestive System

Match the descriptions with the parts of the digestive system.

J anus

I digestive tract

D esophagus

C large intestine

H liver

F mouth

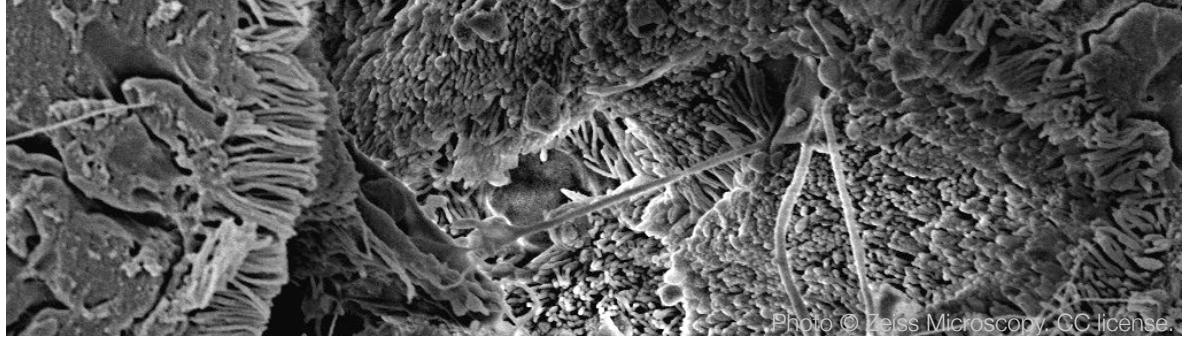
E pancreas

B small intestine

G stomach

A villi

- A. small protrusions lining the intestines that increase surface area to speed absorption of nutrients
- B. the narrower part of the intestines, where most digestion occurs
- C. the wider part of the intestines, where water is absorbed
- D. a muscular tube connecting the mouth and stomach
- E. an organ that produces insulin
- F. the first part of the digestive tract, where food is mechanically and chemically broken down
- G. an organ that holds food and further digests it with enzymes and acid
- H. an organ that produces bile, which aids in digesting fats
- I. a long tube with an opening at each end, where food is digested; made up of several organs
- J. the last part of the digestive tract, where feces emerges



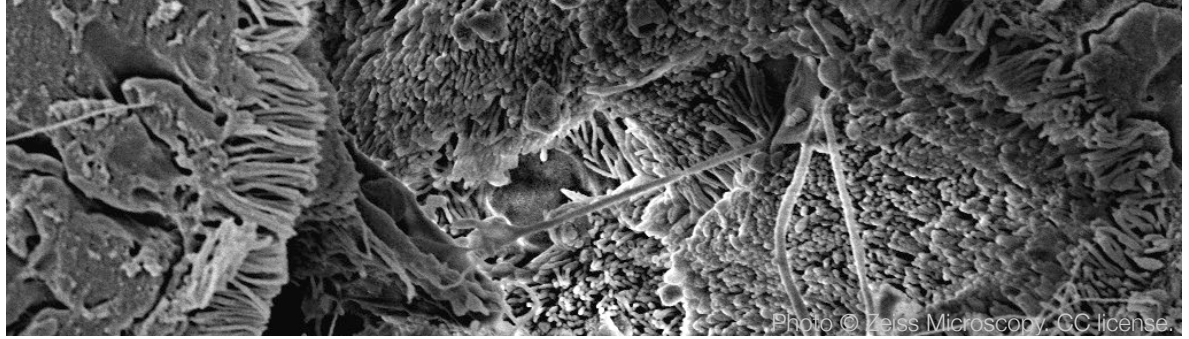
B2.1

use appropriate terminology
related to animal systems

Parts of the **Respiratory System**

Match the descriptions with the parts of the respiratory system.

- | | |
|------------------|---------------------------------------------------------------------------------------------------|
| ____lung | A. a large air-filled space in the middle of the face, which conditions the air being breathed in |
| ____alveolus | B. the muscle that moves the lungs |
| ____pharynx | C. hairlike projections that help move mucus and filter out foreign material |
| ____trachea | D. the tube that connects a single lung to the trachea |
| ____mucus | E. a slippery secretion that traps foreign particles entering the nasal passage |
| ____bronchus | F. the diffusion of oxygen into the bloodstream, and carbon dioxide out of the bloodstream |
| ____gas exchange | G. the organ where gas exchange occurs |
| ____diaphragm | H. a small sac in the lungs lined with capillaries |
| ____cilia | I. a tube ringed with cartilage that passes air to the lungs |
| ____nasal cavity | J. the throat, which can pass both food and air |



B2.1

use appropriate terminology
related to animal systems

Parts of the Respiratory System

Match the descriptions with the parts of the respiratory system.

G lung

H alveolus

J pharynx

I trachea

E mucus

D bronchus

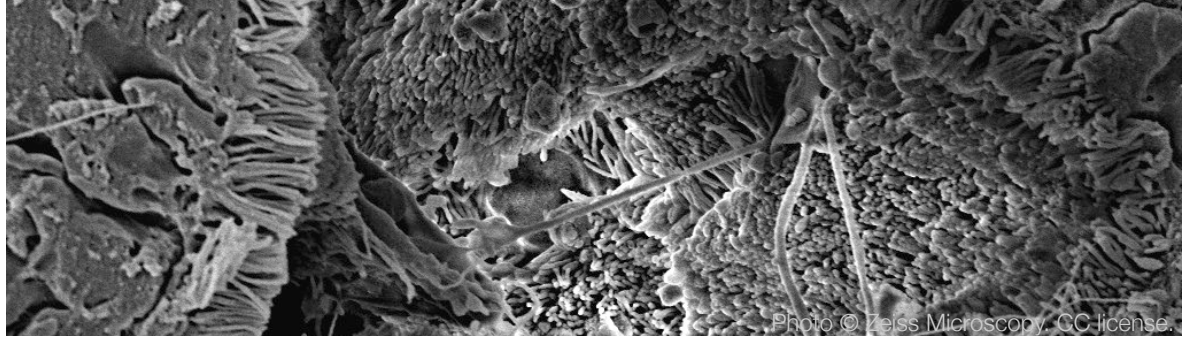
F gas exchange

B diaphragm

C cilia

A nasal cavity

- A. a large air-filled space in the middle of the face, which conditions the air being breathed in
- B. the muscle that moves the lungs
- C. hairlike projections that help move mucus and filter out foreign material
- D. the tube that connects a single lung to the trachea
- E. a slippery secretion that traps foreign particles entering the nasal passage
- F. the diffusion of oxygen into the bloodstream, and carbon dioxide out of the bloodstream
- G. the organ where gas exchange occurs
- H. a small sac in the lungs lined with capillaries
- I. a tube ringed with cartilage that passes air to the lungs
- J. the throat, which can pass both food and air



B2.1

use appropriate terminology
related to animal systems

Parts of the **Respiratory System**

Match the descriptions with the parts of the respiratory system.

____pharynx

____cilia

____trachea

____mucus

____bronchus

____lung

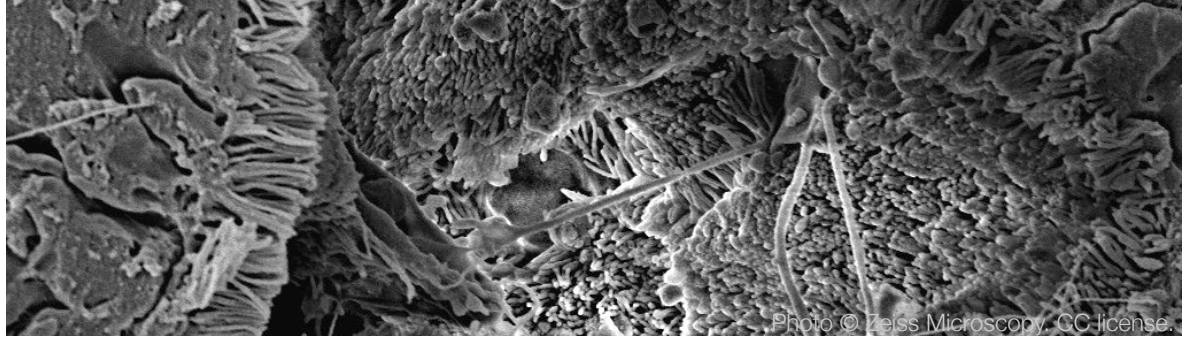
____gas exchange

____alveolus

____diaphragm

____nasal cavity

- A. the diffusion of oxygen into the bloodstream, and carbon dioxide out of the bloodstream
- B. a tube ringed with cartilage that passes air to the lungs
- C. the muscle that moves the lungs
- D. the tube that connects a single lung to the trachea
- E. a slippery secretion that traps foreign particles entering the nasal passage
- F. hairlike projections that help move mucus and filter out foreign material
- G. the organ where gas exchange occurs
- H. a small sac in the lungs lined with capillaries
- I. a large air-filled space in the middle of the face, which conditions the air being breathed in
- J. the throat, which can pass both food and air



B2.1

use appropriate terminology
related to animal systems

Parts of the Respiratory System

Match the descriptions with the parts of the respiratory system.

J pharynx

F cilia

B trachea

E mucus

D bronchus

G lung

A gas exchange

H alveolus

C diaphragm

I nasal cavity

- A. the diffusion of oxygen into the bloodstream, and carbon dioxide out of the bloodstream
- B. a tube ringed with cartilage that passes air to the lungs
- C. the muscle that moves the lungs
- D. the tube that connects a single lung to the trachea
- E. a slippery secretion that traps foreign particles entering the nasal passage
- F. hairlike projections that help move mucus and filter out foreign material
- G. the organ where gas exchange occurs
- H. a small sac in the lungs lined with capillaries
- I. a large air-filled space in the middle of the face, which conditions the air being breathed in
- J. the throat, which can pass both food and air



Photo © Patrick Siemer. CC license.

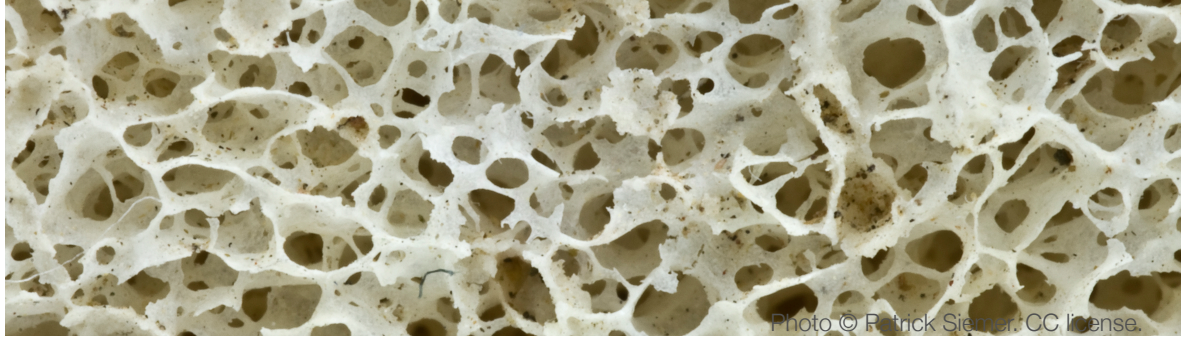
B2.1

use appropriate terminology
related to animal systems

Parts of the **Musculoskeletal System**

Match the descriptions with the parts of the musculoskeletal system.

- | | |
|----------------------------|---------------------------------------------------------------------------------------|
| ____osteoblast | A. a rigid organ made up of dense connective tissue |
| ____cardiac muscle tissue | B. involuntary striated muscle tissue in the heart |
| ____ligament | C. a long cell containing specialized proteins that can contract, shortening the cell |
| ____tendon | D. tough, elastic connective tissue that holds bones together at joints |
| ____cartilage | E. involuntary non-striated muscle tissue |
| ____osteoporosis | F. a strong band of connective tissue connecting a muscle to a bone |
| ____smooth muscle tissue | G. the specialized cell that makes bone |
| ____bone | H. a disease involving loss of bone tissue, making bones weak and brittle |
| ____muscle fibre | I. striated muscle tissue under voluntary control |
| ____skeletal muscle tissue | J. dense, flexible connective tissue providing low-friction support |



B2.1

use appropriate terminology
related to animal systems

Parts of the Musculoskeletal System

Match the descriptions with the parts of the musculoskeletal system.

G osteoblast

B cardiac muscle tissue

D ligament

F tendon

J cartilage

H osteoporosis

E smooth muscle tissue

A bone

C muscle fibre

I skeletal muscle tissue

A. a rigid organ made up of dense connective tissue

B. involuntary striated muscle tissue in the heart

C. a long cell containing specialized proteins that can contract, shortening the cell

D. tough, elastic connective tissue that holds bones together at joints

E. involuntary non-striated muscle tissue

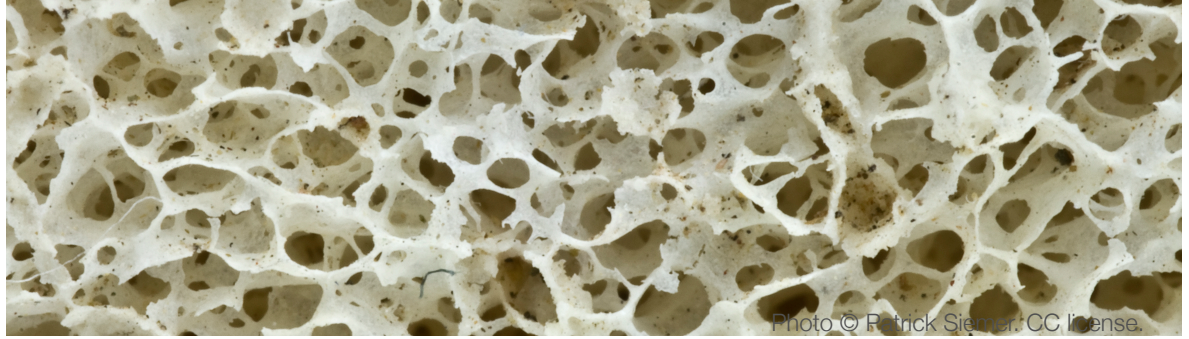
F. a strong band of connective tissue connecting a muscle to a bone

G. the specialized cell that makes bone

H. a disease involving loss of bone tissue, making bones weak and brittle

I. striated muscle tissue under voluntary control

J. dense, flexible connective tissue providing low-friction support

**B2.1**

use appropriate terminology
related to animal systems

Parts of the **Musculoskeletal System**

Match the descriptions with the parts of the musculoskeletal system.

- | | |
|----------------------------|---------------------------------------------------------------------------------------|
| ____bone | A. a long cell containing specialized proteins that can contract, shortening the cell |
| ____cardiac muscle tissue | B. tough, elastic connective tissue that holds bones together at joints |
| ____ligament | C. involuntary non-striated muscle tissue |
| ____tendon | D. the specialized cell that makes bone |
| ____osteoporosis | E. a disease involving loss of bone tissue, making bones weak and brittle |
| ____smooth muscle tissue | F. striated muscle tissue under voluntary control |
| ____muscle fibre | G. a strong band of connective tissue connecting a muscle to a bone |
| ____osteoblast | H. involuntary striated muscle tissue in the heart |
| ____cartilage | I. a rigid organ made up of dense connective tissue |
| ____skeletal muscle tissue | J. dense, flexible connective tissue providing low-friction support |



Photo © Patrick Siemer, CC license.

B2.1

use appropriate terminology
related to animal systems

Parts of the Musculoskeletal System

Match the descriptions with the parts of the musculoskeletal system.

I bone

H cardiac muscle tissue

B ligament

G tendon

E osteoporosis

C smooth muscle tissue

A muscle fibre

D osteoblast

J cartilage

F skeletal muscle tissue

A. a long cell containing specialized proteins that can contract, shortening the cell

B. tough, elastic connective tissue that holds bones together at joints

C. involuntary non-striated muscle tissue

D. the specialized cell that makes bone

E. a disease involving loss of bone tissue, making bones weak and brittle

F. striated muscle tissue under voluntary control

G. a strong band of connective tissue connecting a muscle to a bone

H. involuntary striated muscle tissue in the heart

I. a rigid organ made up of dense connective tissue

J. dense, flexible connective tissue providing low-friction support

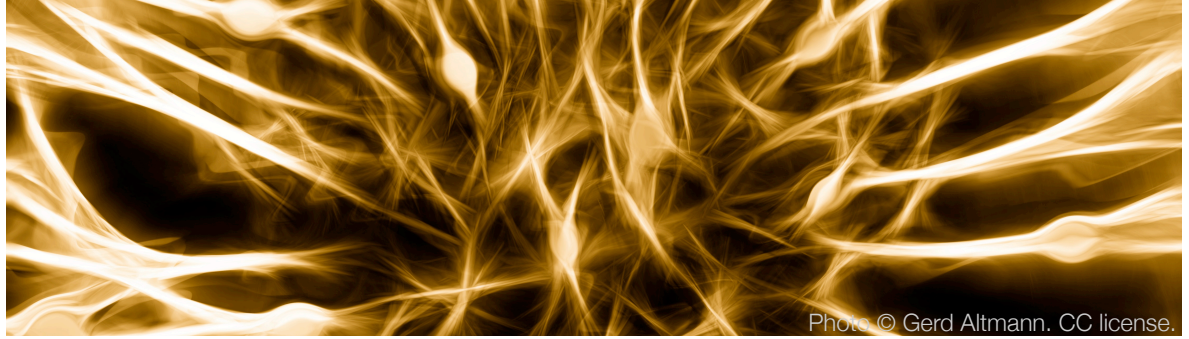


Photo © Gerd Altmann. CC license.

B2.1

use appropriate terminology
related to animal systems

Parts of the Nervous System

Match the descriptions with the parts of the nervous system.

____ brain

____ peripheral nervous system

____ sensory receptor

____ myelin sheath

____ axon

____ central nervous system

____ spinal cord

____ neuron

____ nerve

____ neurologist

A. a nerve cell

B. an insulating sheath surrounding an axon

C. the core of the nervous system, consisting of the brain and spinal cord

D. a doctor specializing in disorders of the nervous system

E. a thick bundle of nerve tissue along the spine

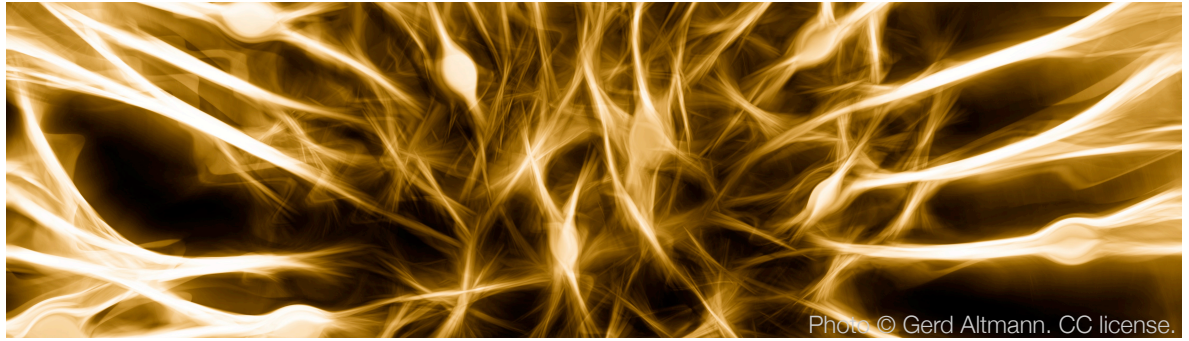
F. nerves that carry signals between the central nervous system and the body

G. bundles of neurons surrounded by connective tissue

H. the long, slender projection of a neuron that carries an electrical signal

I. special cells and tissues that convert input from the external environment into signals

J. the main part of the central nervous system, where an organism's behaviour is controlled



B2.1

use appropriate terminology
related to animal systems

Parts of the Nervous System

Match the descriptions with the parts of the nervous system.

J brain

F peripheral nervous system

I sensory receptor

B myelin sheath

H axon

C central nervous system

E spinal cord

A neuron

G nerve

D neurologist

A. a nerve cell

B. an insulating sheath surrounding an axon

C. the core of the nervous system, consisting of the brain and spinal cord

D. a doctor specializing in disorders of the nervous system

E. a thick bundle of nerve tissue along the spine

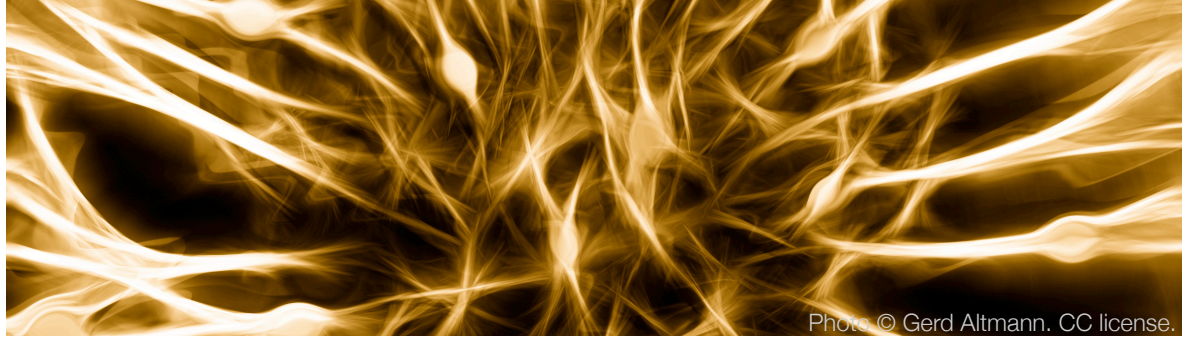
F. nerves that carry signals between the central nervous system and the body

G. bundles of neurons surrounded by connective tissue

H. the long, slender projection of a neuron that carries an electrical signal

I. special cells and tissues that convert input from the external environment into signals

J. the main part of the central nervous system, where an organism's behaviour is controlled



B2.1

use appropriate terminology
related to animal systems

Parts of the Nervous System

Match the descriptions with the parts of the nervous system.

____neuron

____brain

____myelin sheath

____nerve

____axon

____sensory receptor

____central nervous system

____spinal cord

____peripheral nervous system

____neurologist

A. an insulating sheath surrounding an axon

B. the core of the nervous system, consisting of the brain and spinal cord

C. special cells and tissues that convert input from the external environment into signals

D. a thick bundle of nerve tissue along the spine

E. nerves that carry signals between the central nervous system and the body

F. the long, slender projection of a neuron that carries an electrical signal

G. a doctor specializing in disorders of the nervous system

H. bundles of neurons surrounded by connective tissue

I. a nerve cell

J. the main part of the central nervous system, where an organism's behaviour is controlled

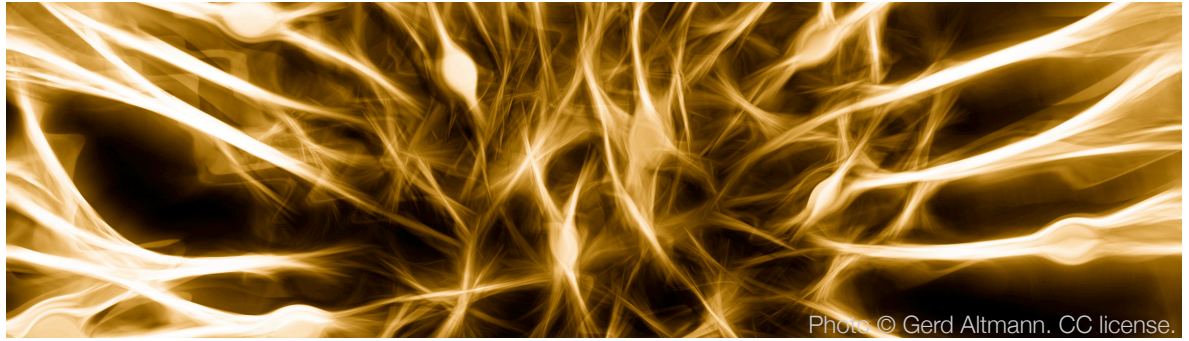


Photo © Gerd Altmann. CC license.

B2.1

use appropriate terminology
related to animal systems

Parts of the Nervous System

Match the descriptions with the parts of the nervous system.

I neuron

J brain

A myelin sheath

H nerve

F axon

C sensory receptor

B central nervous system

D spinal cord

E peripheral nervous system

G neurologist

A. an insulating sheath surrounding an axon

B. the core of the nervous system, consisting of the brain and spinal cord

C. special cells and tissues that convert input from the external environment into signals

D. a thick bundle of nerve tissue along the spine

E. nerves that carry signals between the central nervous system and the body

F. the long, slender projection of a neuron that carries an electrical signal

G. a doctor specializing in disorders of the nervous system

H. bundles of neurons surrounded by connective tissue

I. a nerve cell

J. the main part of the central nervous system, where an organism's behaviour is controlled